

SEMOPx Auctions Training

Version 2
March 2021



SEMOpX

Auctions Training

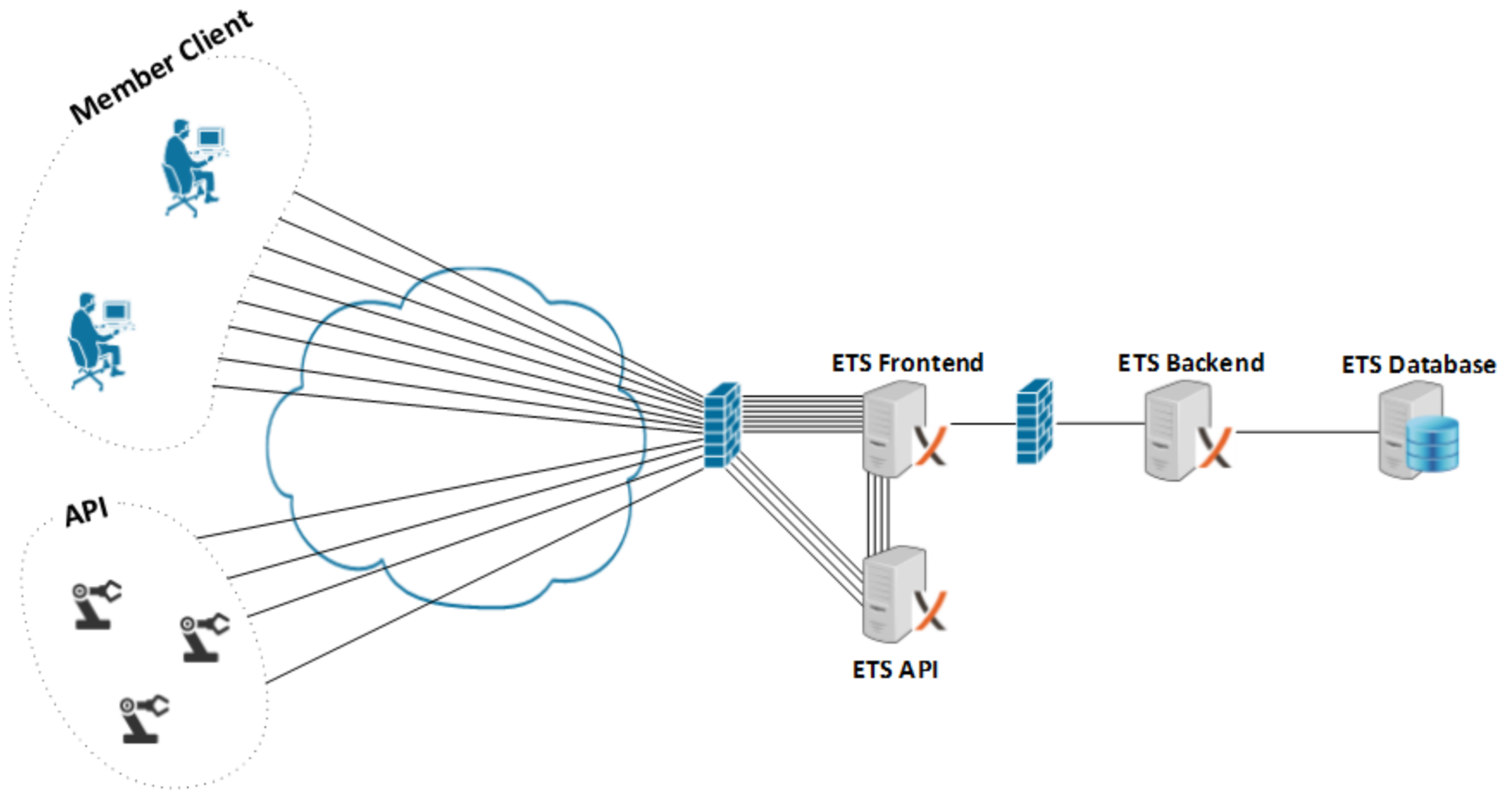
Agenda

1. ETS - General overview
2. ETS - Installation and technical requirements
3. ETS - API overview
4. ETS - Connection and security
5. ETS - Trading Functionalities
6. ETS - Trading on behalf forms (ToB)
7. ETS – Reporting capabilities

1 General Overview - *Market overview*

- **EPEX Trading System (ETS)** for Day-ahead auction and Intraday auctions
- **Portfolio will be set up and will correspond to the Unit ID**
 - Used to submit orders
 - Retrieved in the result files

General overview - *Technical overview - ETS*



2 Installation and Technical requirements

ETS - Overview of ETS Trading System

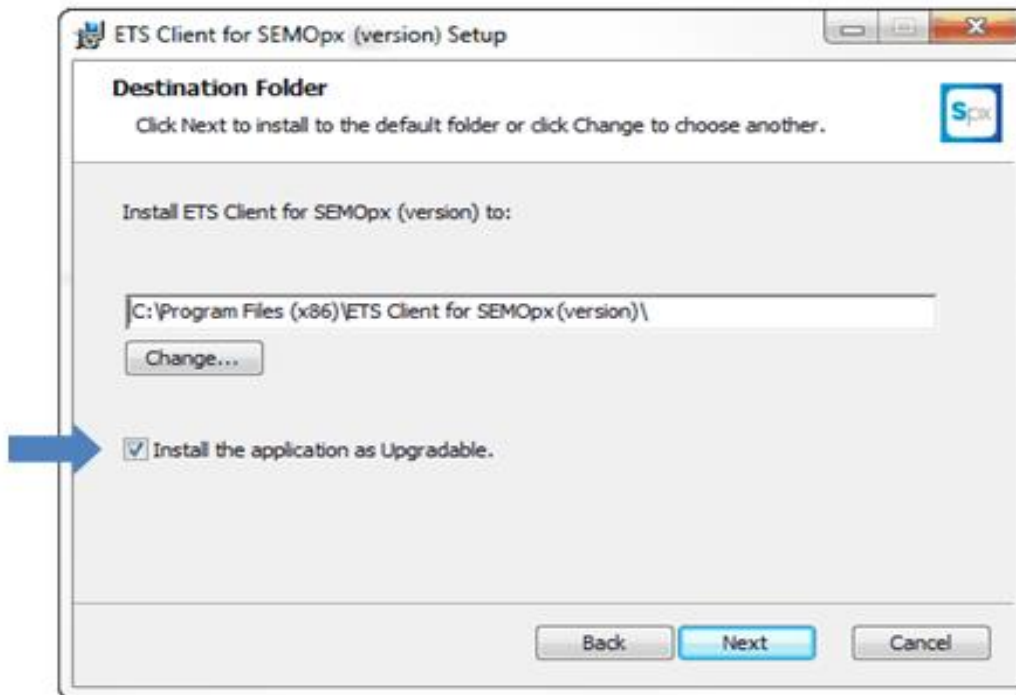
- FAT Client, executable to be installed on the PC
- Two types of clients are available with two difference installation modes:
 - Upgradable per default 'install the application as Upgradable' is ticked.
 - Fixed: when there is a new version of the client, the participant will have to manually perform the upgrade.

ETS Installation recommendation – Upgradable version

The Upgradable Client is a full client, containing all program logic needed to perform trader actions. The Upgradable Client is able to update to the latest program logic and will automatically update itself to the latest version when such code becomes available.

This ensures the client software is always up to date without the need to manually download and install the newest version.

Please be informed that the upgradable client installation is ticked by default. In order to install the fixed version, the following option needs to be un-ticked during the installation process.



Please note that it is not possible to install both the Fixed and the Upgradable versions at the same time on the same machine.

ETS - *Minimum technical requirements for ETS client*

Recommended system requirements for the client computer:

- Intel Dual Core or equivalent processor,
- 2048 MB internal memory,
- 100 Mb of free Hard Disk space.
- Each upgradable client version collected from the exchange server is locally stored, requiring approximately an additional 15Mb per version.

Supported operating systems:

- Windows7 Professional or Ultimate, latest service pack
- Windows8 Professional or Enterprise, latest service pack
- Windows10 Pro or Enterprise, latest service pack
- MS Excel 2010, 2013
- Please note that MS Excel Viewer is not supported.

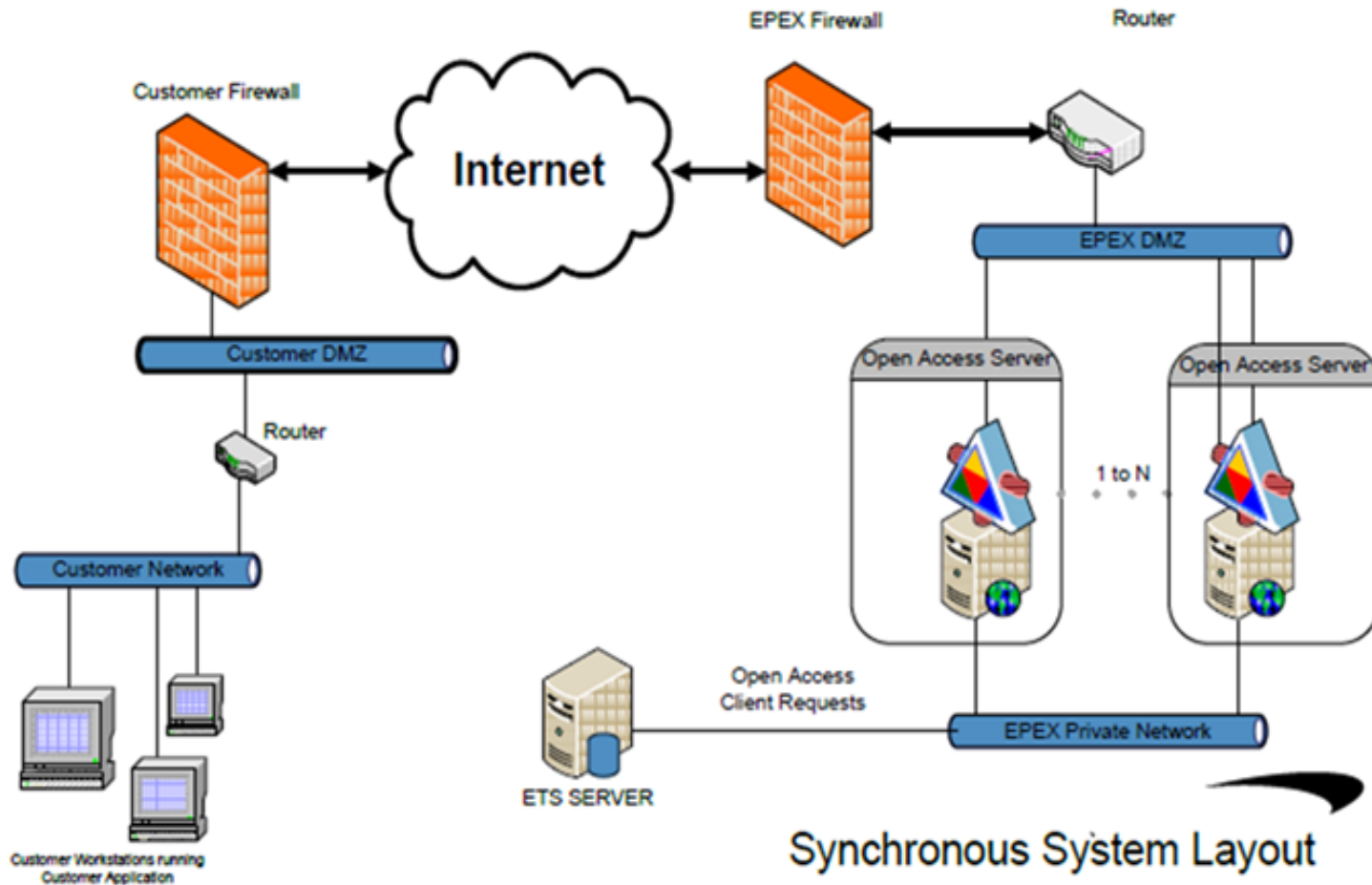
Network settings:

- EPEX Spot Trader Client requires a stable Internet connection.
- Recommended minimum connection speed is 256Kbit/s or better.
- All traffic is TLS encrypted.

Proxy support

- The EPEX Spot Trader Client does support connecting to an exchange using HTTP CONNECT proxy servers.

3 API Overview - ETS API



ETS API

- Is a Soap Web services
- Is secured using 2 ways authentication (TLS 1.2 + Server and Client certificate)
- Require a User and password to connect
- Allow Synchronous request like
 - Send order
 - Update order
 - Delete order
 - Retrieve order
 - Retrieve Market Results

4 Connection and Security - *Starting the ETS the first time*

Before a connection can be made to the servers, the Network Settings need to be defined.

After installation, the default Server Address and Server Port require modification into the settings provided by the exchange.

Enter the network details (server address and port):

Network Settings [Global Settings]

Server

Server Address: [Server Address] Server Port: [4443]

Use Secure Connection

Proxy

Use Http Connect Proxy

Proxy Server Address: [your.proxy.server.here] Proxy Server Port: [80] Proxy Server User (optional): []

Reset Update

Not connected

ETS Secure connection

Default secure connection

The Trader Client connects using TLS 1.2 with the Exchange server. Default this is set to enabled.

Proxy connection

The Trader Client can connect over a proxy server that needs authentication and supports the use of HTTP CONNECT proxy.

The authentication protocol that is supported is the 'http basic authentication' standard, no other authentication protocols are currently implemented.

More technically: The proxy protocol used is the 'http CONNECT tunnel' standard.

When the Trader Client connects to the proxy server it will pop-up a dialog box that requests the user name and password for proxy server access.

It is possible to fill in the user name in the ETS trade client settings panel, so that the proxy user name does not need to be typed into the dialog every time a trader logs in.

In order to activate HTTP CONNECT Proxy Settings, enable the corresponding checkbox in the Global Settings.

Limit the IP address

Upon request, the exchange can restrict the connection to specific IP addressed.

Firewall configuration

If your firewall implements packet inspection, you may need to disable this functionality for ETS. Some packet inspection system don't support the ETS implementation of TLS 1.2.

ETS - Users and passwords

- **User IDs (logins) and passwords are not linked to traders.** A User ID can be shared among several traders of a company (but not at the same time). It is the company's responsibility to decide if the password of a User ID can be shared among several traders or if a User ID is to be used only by one of them.
- Initial passwords are valid 7 days and they must be changed in order to extend their validity to 3 months.
- There is a specific login for the **production** environment and another one for the **simulation** environment.

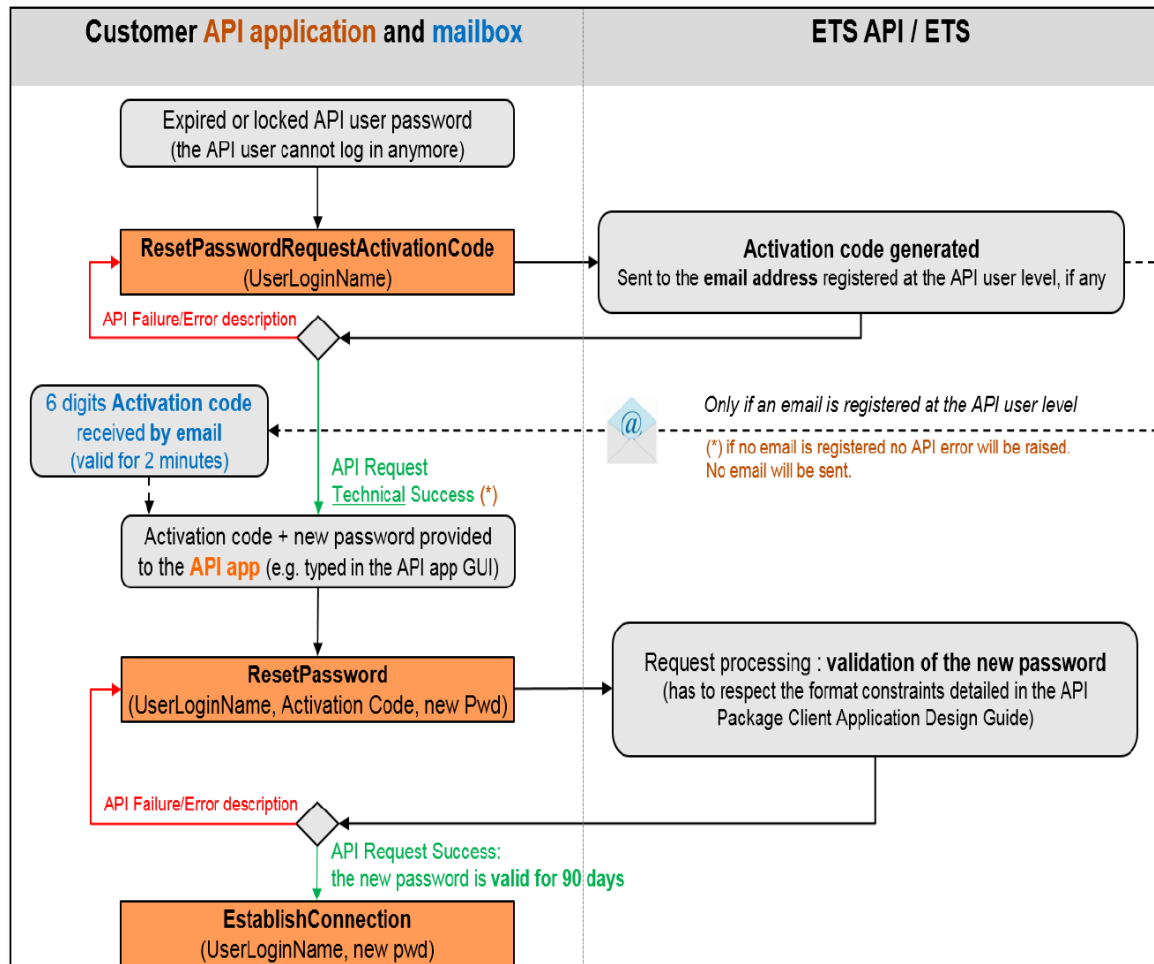


Be aware that you have a maximum of three attempts to enter a correct password.

After the third invalid attempt, your User ID will be blocked from access until the exchange operator resets your User ID.

Upon written request (email), the exchange can either reset the tries left (so the current password remains valid) or provide a new password by email. The request should come only from an authorized trader.

ETS – Password reset



Users are also able to change forgotten, expired or locked passwords through the client. From the main welcome screen, select 'change password' feature and user will get a validation code via email to enter the new password.

Users can then handle their password reset autonomously without contacting SEMOpX Market Operations. In order to activate this functionality, please make sure to provide Market Operations with the email address(es) to be associated with your respective ETS user(s).

ETS Connection to the upgradable client

Once you enter your User ID, click on the Connect button or press ENTER.

The Upgradable Client will perform a version check.

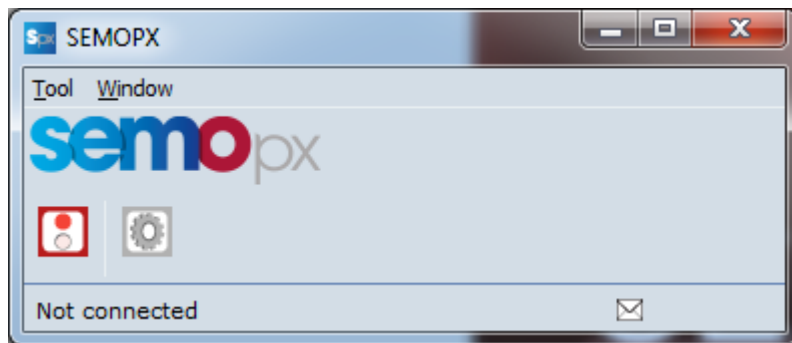
One of two things can happen, depending on the availability of newer versions:

Option 1:

If no newer version is detected, the login sequence will proceed after which the Main Tool will be presented.

Option 2:

If a newer version is detected, the newer version is automatically fetched from the exchange server. This is indicated with the 'Fetching update for' message.



The newest version will be downloaded automatically, and installed. Depending on the internet speed and size of the download, this process can take a short while.

This procedure requires a restart of the Upgradable Client once to execute the update, for which you will be prompted in a dialog.

5 ETS Trading Functionalities - Topics

- **General**
 - Welcome screen
 - ETS General Settings
 - ETS Trader Client Settings
- **ETS Market Global View**
- **Order management**
 - Enter linear (stepwise) order
 - Enter linear orders for several days at a time
 - Modify order and check for differences
 - Cancel Linear Order
 - Enter Complex Order
 - Modify Complex Order
 - Cancel Complex Order
- **Define Reasonable Control Parameters**
- **Check Trading Limits**

ETS Welcome Screen

The Trader Client is the trading interface screen of the exchange environment. The Trader Client displays the modules that are available to the user that is logged in.



From left to right, the launcher above displays the (Dis)Connect, Global View, Client Message Book, Financial Book, Settings and Change Password icons.

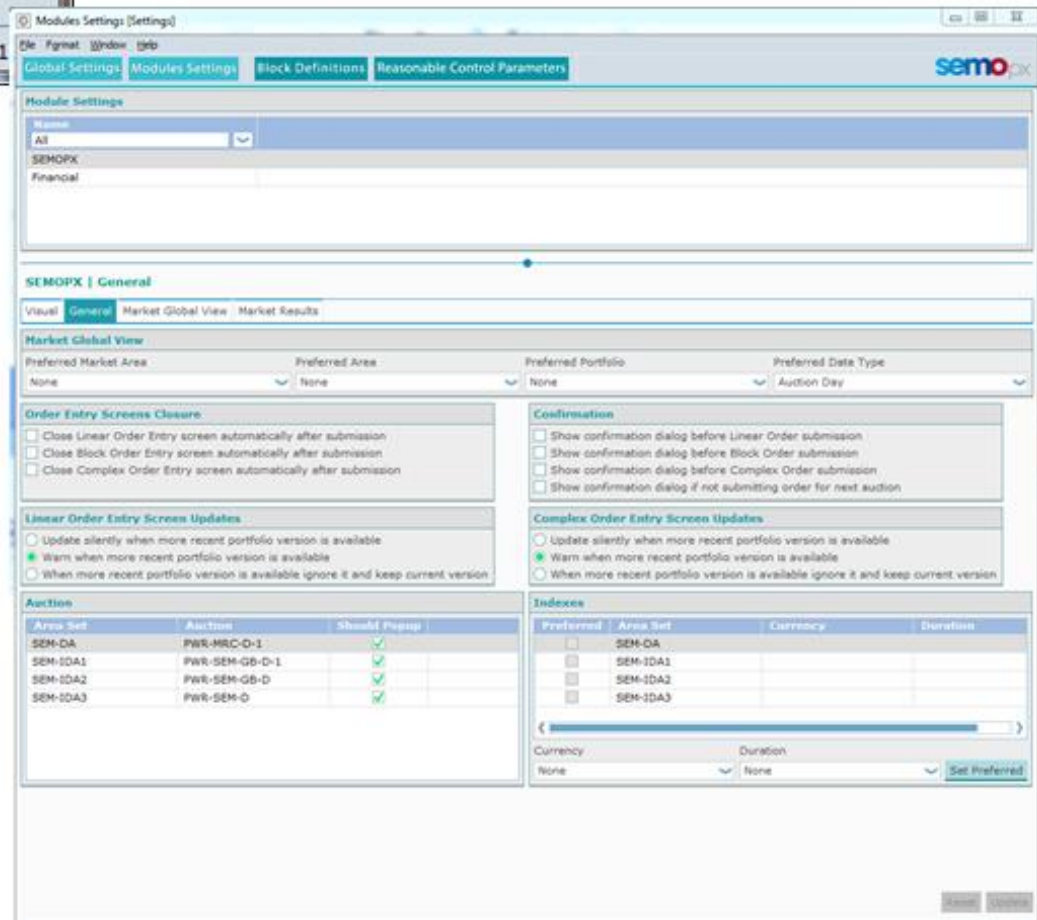
The connection state bar at the bottom of the launcher indicates you are logged in and to which server-environment.

The clock to the right displays the exchange server time, modified to your local time setting. This clock will not necessarily be identical to the time of your local computer. The clock settings can be configured in the Time Zone settings.

ETS General Settings



The Settings Book is the screen where you can define custom display and behaviour settings.



ETS Market Global View

The Market Global View is the main trading interface.

In the upper pane of this screen a user has overview of outstanding bids, and can access bid submission screens.

In the lower pane, under Messages: an overview is given of bid submissions and other bid status change messages, as well as the titles of operator messages.

Red coloured messages indicate important information, such as Password expiry, Market Result cancellation and the reception of an exchange message.

SEMOPX
Tool Window
Global View
TCOMAZE-U01@uat2.ets2.epex.spot:443

Market Global View - Factory View [Epex Trading System]

Day Type
Auction Day

Delivery Day	Area	PartID	Auction Date Time	Order Book Status	Duration	Currency	Linear	Last Update Time	Block	Last Update Time	Complex	Last Update Time
22/07/2017	NI-SONI-DA	PART-TS01	SEMO-DA-12.00 2017-07-21-12:00	OBK Closed	60 min	GBP	none	none	none	none	none	none
22/07/2017	NI-SONI-DA	PART-TS02	SEMO-DA-12.00 2017-07-21-12:00	OBK Closed	60 min	GBP	none	none	none	none	none	none
22/07/2017	NI-SONI-IDA1	PART-TS01	SEMO-IDA1-16.30 2017-07-21-16:30	OBK Open	30 min	GBP	none	none	none	none	none	none
22/07/2017	NI-SONI-IDA1	PART-TS02	SEMO-IDA1-16.30 2017-07-21-16:30	OBK Open	30 min	GBP	none	none	none	none	none	none
21/07/2017	NI-SONI-IDA2	PART-TS01	SEMO-IDA2-09.00 2017-07-21-09:00	OBK Closed	30 min	GBP	none	none	none	none	none	none
21/07/2017	NI-SONI-IDA2	PART-TS02	SEMO-IDA2-09.00 2017-07-21-09:00	OBK Closed	30 min	GBP	none	none	none	none	none	none
21/07/2017	NI-SONI-IDA3	PART-TS01	SEMO-IDA3-15.00 2017-07-21-15:00	OBK Closed	30 min	GBP	none	none	none	none	none	none
21/07/2017	NI-SONI-IDA3	PART-TS02	SEMO-IDA3-15.00 2017-07-21-15:00	OBK Closed	30 min	GBP	none	none	none	none	none	none
22/07/2017	ROI-EIRGRID-DA	PART-TS01	SEMO-DA-12.00 2017-07-21-12:00	OBK Closed	60 min	EUR	none	none	none	none	none	none
22/07/2017	ROI-EIRGRID-DA	PART-TS02	SEMO-DA-12.00 2017-07-21-12:00	OBK Closed	60 min	EUR	none	none	none	none	none	none
22/07/2017	ROI-EIRGRID-IDA1	PART-TS01	SEMO-IDA1-16.30 2017-07-21-16:30	OBK Open	30 min	EUR	none	none	none	none	none	none
22/07/2017	ROI-EIRGRID-IDA1	PART-TS02	SEMO-IDA1-16.30 2017-07-21-16:30	OBK Open	30 min	EUR	none	none	none	none	none	none
21/07/2017	ROI-EIRGRID-IDA2	PART-TS01	SEMO-IDA2-09.00 2017-07-21-09:00	OBK Closed	30 min	EUR	none	none	none	none	none	none
21/07/2017	ROI-EIRGRID-IDA2	PART-TS02	SEMO-IDA2-09.00 2017-07-21-09:00	OBK Closed	30 min	EUR	none	none	none	none	none	none
21/07/2017	ROI-EIRGRID-IDA3	PART-TS01	SEMO-IDA3-15.00 2017-07-21-15:00	OBK Closed	30 min	EUR	none	none	none	none	none	none
21/07/2017	ROI-EIRGRID-IDA3	PART-TS02	SEMO-IDA3-15.00 2017-07-21-15:00	OBK Closed	30 min	EUR	none	none	none	none	none	none

Messages:

Time	Title
21 July 2017 14:51:52	Cancelled Block Bid(s) PART-TS01 / NI-SONI-IDA1 / 30 min / 2017-07-22-14:30
21 July 2017 14:49:44	Submitted Block Bid(s) PART-TS01 / NI-SONI-IDA1 / 30 min / 2017-07-22-14:30
21 July 2017 14:44:54	Cancelled LinearOrder PART-TS01 / NI-SONI-DA / 60 min / 2017-07-22-10:00
21 July 2017 14:44:39	Submitted LinearOrder PART-TS01 / NI-SONI-DA / 60 min / 2017-07-22-10:00
21 July 2017 14:43:49	Submitted LinearOrder PART-TS01 / NI-SONI-DA / 60 min / 2017-07-28-10:00
21 July 2017 14:43:49	Submitted LinearOrder PART-TS01 / NI-SONI-DA / 60 min / 2017-07-22-10:00

Logs of your actions + all market messages received in ETS from the Exchange Market Operations

SEMOPX
TRADER500@epwets407:4443 15:17:22

Enter linear (Stepwise order)

The Linear Bid Entry screen can be accessed via Market Global View under the double-click mouse action or Show Linear button of the Market Global View screen.

Alternatively, double-click the “Linear” or “Linear last update time” field if you wish to open a Linear Bid screen.

NI-SONI-DA-PART-TS02:60 min Linear Bid Entry [Epex Trading System]

Auction Date: 22 July 2017 | Auction Name: SEMO-DA-12.00 | Delivery Date: 23 July 2017 | Area: NI-SONI-DA | Portfolio: PART-TS02 | Duration: 60 min | GBP Stepwise

Import Bid | Export Bid | Delete | Differences

(TR 295) The order should have at least one curve entered

Order - 60 min

Submit Several Delivery Days

User Comment

Comment	Period	-1,500.00	9,000.00
	23 - 00		
	00 - 01		
	01 - 02		
	02 - 03		
	03 - 04		
	04 - 05		
	05 - 06		
	06 - 07		
	07 - 08		
	08 - 09		
	09 - 10		
	10 - 11		
	11 - 12		
	12 - 13		
	13 - 14		
	14 - 15		
	15 - 16		
	16 - 17		
	17 - 18		
	18 - 19		
	19 - 20		
	20 - 21		
	21 - 22		
	22 - 23		
	Sum	0.0	0.0

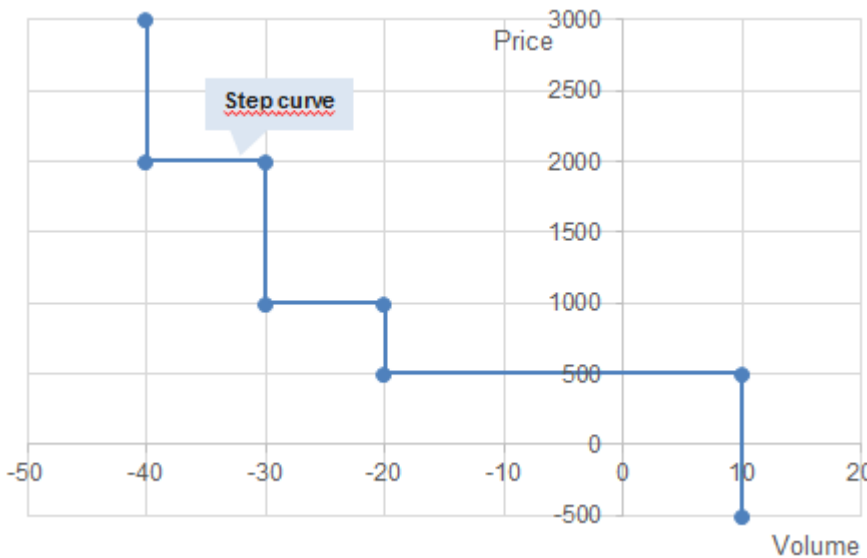
Min/Max price
NI (GBP) : -1500 / +9000
ROI (EUR) : - 500 / +3000

Add Prices | Modify Price | Remove Price | Copy Line | Paste Line | Replicate To All | Adjust to Price Limit

TRADER500@sepxwets407:4443 15:18:24

ETS Stepwise Orders > order entry

- Minimum 2 (Price; Quantity) combinations per order
- A quantity (positive, negative or zero) must be entered at the price limits
- Positive: you buy
- Negative: you sell
- Zero: no action
- Orders are linear interpolated curves: The member's interest is assumed linear between two price/quantity combinations



Stepwise order grid in ETS

Period	-500.0	500.0	500.0	1,000.0	1,000.0	2,000.0	2,000.0	3,000.0
00 - 01	10.0	10.0	-20.0	-20.0	-30.0	-30.0	-40.0	-40.0

For each price you need to have 2 couples (price; quantity). For min and max price, this is not needed because implicitly the other (price;quantity) couple contains the same price and quantity at 0.

Corresponding excel copy/paste

	A	B	C	D	E	F	G	H
1	-500	500	500	1000	1000	2000	2000	3000
2	10	10	-20	-20	-30	-30	-40	-40

Negative volume is a sell order at that point

ETS - Stepwise orders entry example

OK

Except for min and max prices, each price must be inserted twice to allow a step curve.

Comment	Period	-500.0	30.0	30.0	3,000.0
	00 - 01	50.0	50.0	40.0	40.0
	01 - 02				
	02 - 03				
	03 - 04				
	04 - 05				
	05 - 06				
	06 - 07				
	07 - 08				
	08 - 09				
	09 - 10				
	10 - 11				
	11 - 12				

 NOK

If one « double » price is missing, an error message appears

Comment	Period	-500.0	30.0	30.0	3,000.0
	00 - 01	50.0	40.0		40.0
	01 - 02				
	02 - 03				
	03 - 04				
	04 - 05				
	05 - 06				
	06 - 07				
	07 - 08				
	08 - 09				
	09 - 10				
	10 - 11				
	11 - 12				

The order must build a step curve. Quantities must be replicated to create vertical segments. Here the « 40 » is different from « 50 » on the left and this creates an error as well.

	21 - 22				
	22 - 23				
	23 - 24				
	Sum	50.0	40.0	0.0	40.0

(TR 114) Illogical bid for hour: 00 - 01

Example: Demand order

	-500	10	10	100	100	3000
1	30	30	20	20	10	10
2						
3						

- At a price of -500 I want to buy 30
- Between price -500 & 10 I want to buy 30
- At price 10 I want to buy between 30 & 20
- Between price 10 & 100 I want to buy 20
- At price 100 I want to buy between 20 & 10
- Between price 100 & 3000 I want to buy 10
- At price 3000 I want to buy 10, in case of curtailment the qty can be between 0 and 10

The quantity that will be allocated depending on the price in both cases is:

- At price 3000 the qty is between 0 & 10
- For a price between 3000 & 100 the qty can only be 10
- At a price 100 the qty is between 10 & 20
- For a price between 100 & 10 the qty can only be 20
- At a price 10 the qty is between 20 & 30
- For a price below 10 the qty is 30

Enter linear orders for several days

NI-SONI-DA:PART-TS02:60 min Linear Bid Entry [Epx Trading System]

Auction Date: 22 July 2017 | Auction Name: SEMO-DA-12.00 | Delivery Date: 23 July 2017 | Area: NI-SONI-DA | Portfolio: PART-TS02 | Duration: 60 min

GBP Stepwise | NI-SONI DA

Import Bid | Export Bid | Delete | Differences

No errors

Order - 60 min

Submit Several Delivery Days

From: 23/07/2017 To: 31/07/2017

All | Monday To Friday | Saturday To Sunday | Mon Tue Wed Thu Fri Sat Sun

User Comment

Comment	Period	-1,500.00	-200.00	-200.00	-50.00	-50.00	0.00	0.00	100.00	100.00	200.00	200.00	9,000.00
	23 - 00	200.0	200.0	100.0	100.0	0.0	0.0	-300.0	-300.0	-350.0	-350.0	-500.0	-500.0
	00 - 01	200.0	200.0	100.0	100.0	0.0	0.0	-300.0	-300.0	-350.0	-350.0	-500.0	-500.0
	01 - 02	200.0	200.0	100.0	100.0	0.0	0.0	-300.0	-300.0	-350.0	-350.0	-500.0	-500.0
	02 - 03	200.0	200.0	100.0	100.0	0.0	0.0	-300.0	-300.0	-350.0	-350.0	-500.0	-500.0
	03 - 04	200.0	200.0	100.0	100.0	0.0	0.0	-300.0	-300.0	-350.0	-350.0	-500.0	-500.0
	04 - 05	200.0	200.0	100.0	100.0	0.0	0.0	-300.0	-300.0	-350.0	-350.0	-500.0	-500.0
	05 - 06	200.0	200.0	100.0	100.0	0.0	0.0	-300.0	-300.0	-350.0	-350.0	-500.0	-500.0
	06 - 07	200.0	200.0	100.0	100.0	0.0	0.0	-300.0	-300.0	-350.0	-350.0	-500.0	-500.0
	07 - 08	200.0	200.0	100.0	100.0	0.0	0.0	-300.0	-300.0	-350.0	-350.0	-500.0	-500.0
	08 - 09	200.0	200.0	100.0	100.0	0.0	0.0	-300.0	-300.0	-350.0	-350.0	-500.0	-500.0
	09 - 10	200.0	200.0	100.0	100.0	0.0	0.0	-300.0	-300.0	-350.0	-350.0	-500.0	-500.0
	10 - 11	200.0	200.0	100.0	100.0	0.0	0.0	-300.0	-300.0	-350.0	-350.0	-500.0	-500.0
	11 - 12	200.0	200.0	100.0	100.0	0.0	0.0	-300.0	-300.0	-350.0	-350.0	-500.0	-500.0
	12 - 13	200.0	200.0	100.0	100.0	0.0	0.0	-300.0	-300.0	-350.0	-350.0	-500.0	-500.0
	13 - 14	200.0	200.0	100.0	100.0	0.0	0.0	-300.0	-300.0	-350.0	-350.0	-500.0	-500.0
	14 - 15	200.0	200.0	100.0	100.0	0.0	0.0	-300.0	-300.0	-350.0	-350.0	-500.0	-500.0
	15 - 16	200.0	200.0	100.0	100.0	0.0	0.0	-300.0	-300.0	-350.0	-350.0	-500.0	-500.0
	16 - 17	200.0	200.0	100.0	100.0	0.0	0.0	-300.0	-300.0	-350.0	-350.0	-500.0	-500.0
	17 - 18	200.0	200.0	100.0	100.0	0.0	0.0	-300.0	-300.0	-350.0	-350.0	-500.0	-500.0
	18 - 19	200.0	200.0	100.0	100.0	0.0	0.0	-300.0	-300.0	-350.0	-350.0	-500.0	-500.0
	19 - 20	200.0	200.0	100.0	100.0	0.0	0.0	-300.0	-300.0	-350.0	-350.0	-500.0	-500.0
	20 - 21	200.0	200.0	100.0	100.0	0.0	0.0	-300.0	-300.0	-350.0	-350.0	-500.0	-500.0
	21 - 22	200.0	200.0	100.0	100.0	0.0	0.0	-300.0	-300.0	-350.0	-350.0	-500.0	-500.0
	22 - 23	200.0	200.0	100.0	100.0	0.0	0.0	-300.0	-300.0	-350.0	-350.0	-500.0	-500.0
	Sum	4,800.0	4,800.0	2,400.0	2,400.0	0.0	0.0	+7,200.0	+7,200.0	-8,400.0	-8,400.0	-12,000.0	-12,000.0

Add Prices | Modify Price | Remove Price | Copy Line | Paste Line | Replicate To All | Adjust to Price Limit

Close Submit

TRADER500@sepwets407:4443 15:23:13



Possibility to enter buy and sale orders

Modify order and check for differences

NI-SONI-DA-PART-TS02-60 min Linear Bid Entry [Epex Trading System]

File View Format Settings Window Help

Auction Date: 23 July 2017 Auction Name: SEMO-DA-12.00 Delivery Date: 24 July 2017 Area: NI-SONI-DA Portfolio: PART-TS02 Duration: 60 min

GBP Stepwise INACTIVE NI-SONI DA

Import Bid Export Bid Delete Differences 1

No errors

Order - 60 min

Submit Several Delivery Days

User Comment

Comment	Period	-1,500.00	-200.00	-200.00	-50.00	-50.00	0.00	0.00	100.00	100.00	200.00	200.00	9,000.00
23 - 00	500.0	500.0	100.0	100.0	0.0	0.0	-300.0	-300.0	-350.0	-350.0	-500.0	-500.0	
00 - 01	500.0	500.0	100.0	100.0	0.0	0.0	-300.0	-300.0	-350.0	-350.0	-500.0	-500.0	
01 - 02	200.0	200.0	100.0	100.0	0.0	0.0	-300.0	-300.0	-350.0	-350.0	-500.0	-500.0	
02 - 03	200.0	200.0	100.0	100.0	0.0	0.0	-300.0	-300.0	-350.0	-350.0	-500.0	-500.0	
03 - 04	200.0	200.0	100.0	100.0	0.0	0.0	-300.0	-300.0	-350.0	-350.0	-500.0	-500.0	
04 - 05	200.0	200.0	100.0	100.0	0.0	0.0	-300.0	-300.0	-350.0	-350.0	-500.0	-500.0	
05 - 06	200.0	200.0	100.0	100.0	0.0	0.0	-300.0	-300.0	-350.0	-350.0	-500.0	-500.0	
06 - 07	200.0	200.0	100.0	100.0	0.0	0.0	-300.0	-300.0	-350.0	-350.0	-500.0	-500.0	
07 - 08	200.0	200.0	100.0	100.0	0.0	0.0	-300.0	-300.0	-350.0	-350.0	-500.0	-500.0	
08 - 09	200.0	200.0	100.0	100.0	0.0	0.0	-300.0	-300.0	-350.0	-350.0	-500.0	-500.0	
09 - 10	200.0	200.0	100.0	100.0	0.0	0.0	-300.0	-300.0	-350.0	-350.0	-500.0	-500.0	
10 - 11	200.0	200.0	100.0	100.0	0.0	0.0	-300.0	-300.0	-350.0	-350.0	-500.0	-500.0	
11 - 12	200.0	200.0	100.0	100.0	0.0	0.0	-300.0	-300.0	-350.0	-350.0	-500.0	-500.0	
12 - 13	200.0	200.0	100.0	100.0	0.0	0.0	-300.0	-300.0	-350.0	-350.0	-500.0	-500.0	
13 - 14	200.0	200.0	100.0	100.0	0.0	0.0	-300.0	-300.0	-350.0	-350.0	-500.0	-500.0	
14 - 15	200.0	200.0	100.0	100.0	0.0	0.0	-300.0	-300.0	-350.0	-350.0	-500.0	-500.0	
15 - 16	200.0	200.0	100.0	100.0	0.0	0.0	-300.0	-300.0	-350.0	-350.0	-500.0	-500.0	
16 - 17	200.0	200.0	100.0	100.0	0.0	0.0	-300.0	-300.0	-350.0	-350.0	-500.0	-500.0	
17 - 18	200.0	200.0	100.0	100.0	0.0	0.0	-300.0	-300.0	-350.0	-350.0	-500.0	-500.0	
18 - 19	200.0	200.0	100.0	100.0	0.0	0.0	-300.0	-300.0	-350.0	-350.0	-500.0	-500.0	
19 - 20	200.0	200.0	100.0	100.0	0.0	0.0	-300.0	-300.0	-350.0	-350.0	-500.0	-500.0	
20 - 21	200.0	200.0	100.0	100.0	0.0	0.0	-300.0	-300.0	-350.0	-350.0	-500.0	-500.0	
21 - 22	200.0	200.0	100.0	100.0	0.0	0.0	-300.0	-300.0	-350.0	-350.0	-500.0	-500.0	
22 - 23	200.0	200.0	100.0	100.0	0.0	0.0	-300.0	-300.0	-350.0	-350.0	-500.0	-500.0	
Sum		5,400.0	5,400.0	2,400.0	2,400.0	0.0	0.0	-7,200.0	-7,200.0	-8,400.0	-8,400.0	-12,000.0	-12,000.0

Add Prices Modify Price Remove Price Copy Line Paste Line Replicate To All Adjust to Price Limits

Close Submit

TRADER500@sepwets407:4443 15:25:44

Cancel Linear Order

- Open existing order
- Click on delete
- Click on submit
- Deleted order is displayed in violet

Market Global View - Factory View [Epex Trading System]

Day Type
Auction Day

From Date: 22/07/2017

Delivery Day	Area	Portfolio	Auction Date Time	Order Book Status	Duration	Currency	Linear	Last Update Time	Block	Last
23/07/2017	NI-SONI-DA	PART-TS01	SEMO-DA-12.00 2017-07-22-12:00	OBK Open	60 min	GBP	Deleted	21/07/2017 14:44:54	none	
23/07/2017	NI-SONI-DA	PART-TS02	SEMO-DA-12.00 2017-07-22-12:00	OBK Open	60 min	GBP	none		none	
23/07/2017	NI-SONI-IDA1	PART-TS01	SEMO-IDA1-16.30 2017-07-22-16:30	OBK Open	30 min	GBP	none		Exists	21/07/
23/07/2017	NI-SONI-IDA1	PART-TS02	SEMO-IDA1-16.30 2017-07-22-16:30	OBK Open	30 min	GBP	none		none	
22/07/2017	NI-SONI-IDA2	PART-TS01	SEMO-IDA2-09.00 2017-07-22-09:00	OBK Open	30 min	GBP	none		none	
22/07/2017	NI-SONI-IDA2	PART-TS02	SEMO-IDA2-09.00 2017-07-22-09:00	OBK Open	30 min	GBP	none		none	
22/07/2017	NI-SONI-IDA3	PART-TS01	SEMO-IDA3-15.00 2017-07-22-15:00	OBK Open	30 min	GBP	none		none	
22/07/2017	NI-SONI-IDA3	PART-TS02	SEMO-IDA3-15.00 2017-07-22-15:00	OBK Open	30 min	GBP	none		none	
23/07/2017	ROI-EIRGRID-DA	PART-TS01	SEMO-DA-12.00 2017-07-22-12:00	OBK Open	60 min	EUR	none		none	
23/07/2017	ROI-EIRGRID-DA	PART-TS02	SEMO-DA-12.00 2017-07-22-12:00	OBK Open	60 min	EUR	none		none	
23/07/2017	ROI-EIRGRID-IDA1	PART-TS01	SEMO-IDA1-16.30 2017-07-22-16:30	OBK Open	30 min	EUR	none		none	
23/07/2017	ROI-EIRGRID-IDA1	PART-TS02	SEMO-IDA1-16.30 2017-07-22-16:30	OBK Open	30 min	EUR	none		none	
22/07/2017	ROI-EIRGRID-IDA2	PART-TS01	SEMO-IDA2-09.00 2017-07-22-09:00	OBK Open	30 min	EUR	none		none	
22/07/2017	ROI-EIRGRID-IDA2	PART-TS02	SEMO-IDA2-09.00 2017-07-22-09:00	OBK Open	30 min	EUR	none		none	
22/07/2017	ROI-EIRGRID-IDA3	PART-TS01	SEMO-IDA3-15.00 2017-07-22-15:00	OBK Open	30 min	EUR	none		none	
22/07/2017	ROI-EIRGRID-IDA3	PART-TS02	SEMO-IDA3-15.00 2017-07-22-15:00	OBK Open	30 min	EUR	none		none	

Messages:

Time	Text
21 July 2017 15:27:29	Cancelled LinearOrder PART-TS02 / NI-SONI-DA / 60 min / 2017-07-23-10:00
21 July 2017 15:24:49	Submitted LinearOrder PART-TS02 / NI-SONI-DA / 60 min / 2017-07-30-10:00
21 July 2017 15:24:49	Submitted LinearOrder PART-TS02 / NI-SONI-DA / 60 min / 2017-07-27-10:00
21 July 2017 15:24:49	Submitted LinearOrder PART-TS02 / NI-SONI-DA / 60 min / 2017-07-26-10:00
21 July 2017 15:24:49	Submitted LinearOrder PART-TS02 / NI-SONI-DA / 60 min / 2017-07-25-10:00
21 July 2017 15:24:49	Submitted LinearOrder PART-TS02 / NI-SONI-DA / 60 min / 2017-07-24-10:00
21 July 2017 15:24:49	Submitted LinearOrder PART-TS02 / NI-SONI-DA / 60 min / 2017-07-23-10:00
21 July 2017 14:51:52	Cancelled Block Bid(s) PART-TS01 / NI-SONI-IDA1 / 30 min / 2017-07-22-14:30
21 July 2017 14:49:44	Submitted Block Bid(s) PART-TS01 / NI-SONI-IDA1 / 30 min / 2017-07-22-14:30
21 July 2017 14:44:54	Cancelled LinearOrder PART-TS01 / NI-SONI-DA / 60 min / 2017-07-22-10:00
21 July 2017 14:44:39	Submitted LinearOrder PART-TS01 / NI-SONI-DA / 60 min / 2017-07-22-10:00
21 July 2017 14:43:49	Submitted LinearOrder PART-TS01 / NI-SONI-DA / 60 min / 2017-07-28-10:00
21 July 2017 14:43:49	Submitted LinearOrder PART-TS01 / NI-SONI-DA / 60 min / 2017-07-22-10:00

TRADER500@sepwets407:4443 15:28:05

NI-SONI-DA-PART-TS02:60 min Linear Bid Entry [Epex Trading System]

File View Format Settings Window Help

Auction Date: 23 July 2017 | Auction Name: SEMO-DA-12.00 | Delivery Date: 24 July 2017 | Area: NI-SONI-DA | Portfolio: PART-TS02 | Duration: 60 min | GBP

Import Bid | Export Bid | **Delete** | Differences 2

No errors

Order - 60 min

Submit Several Delivery Days

User Comment

Comment	Parbid	Parbid	Parbid
23 - 00	-1,500.00	9,000.00	0.0
00 - 01	0.0	0.0	0.0
01 - 02	0.0	0.0	0.0
02 - 03	0.0	0.0	0.0
03 - 04	0.0	0.0	0.0
04 - 05	0.0	0.0	0.0
05 - 06	0.0	0.0	0.0
06 - 07	0.0	0.0	0.0
07 - 08	0.0	0.0	0.0
08 - 09	0.0	0.0	0.0
09 - 10	0.0	0.0	0.0
10 - 11	0.0	0.0	0.0
11 - 12	0.0	0.0	0.0
12 - 13	0.0	0.0	0.0
13 - 14	0.0	0.0	0.0
14 - 15	0.0	0.0	0.0
15 - 16	0.0	0.0	0.0
16 - 17	0.0	0.0	0.0
17 - 18	0.0	0.0	0.0
18 - 19	0.0	0.0	0.0
19 - 20	0.0	0.0	0.0
20 - 21	0.0	0.0	0.0
21 - 22	0.0	0.0	0.0
22 - 23	0.0	0.0	0.0
Sum	0.0	0.0	0.0

Add Prices | Modify Price | Remove Price | Copy Line | Paste Line | Replicate To All | Adjust to Price Limit

Close Submit

TRADER500@sepwets407:4443 15:27:35

Enter Scalable Complex Orders

Auction Date Time: 13 May 2022 - 12:00 cet/cest
Auction Name: PWR-MRC-D+1
Delivery Date: 14 May 2022
Area: ROI-EIRGRID-DA
Portfolio: GU_402250
Duration: 60 min

EUR ROI-EIRGRID
Stepwise DA

Import Bid Export Bid Delete Differences

(TR 295) The order should have at least one curve entered

Order - 60 min
 Submit Several Delivery Days

Fixed Term: 1 0
Schedule Stop Periods: 1 0
Increase Gradient:
Decrease Gradient:

User Comment:

Comment	Period (gmt/list)	MAV	500.00	4,000.00
	23 - 00			
	00 - 01			
	01 - 02			
	02 - 03			
	03 - 04			
	04 - 05			
	05 - 06			
	06 - 07			
	07 - 08			
	08 - 09			
	09 - 10			
	10 - 11			
	11 - 12			
	12 - 13			
	13 - 14			
	14 - 15			
	15 - 16			
	16 - 17			
	17 - 18			
	18 - 19			
	19 - 20			
	20 - 21			
	21 - 22			
	22 - 23			
Sum			0.0	0.0

Fixed Term:
- Is a mandatory value
- Can be "0"
- Cannot leave blank

MAV:
- New column for entry

Add Prices Modify Price Remove Price Copy Line Paste Line Replicate To All Adjust to Price Limit Close Submit

Enter Scalable Complex Orders

Auction Date Time: 13 May 2022 - 12:00 cet/cest | Auction Name: PWR-MRC-D+1 | Delivery Date: 14 May 2022 | Area: ROI-EIRGRID-DA | Portfolio: GU_402250 | Duration: 60 min

EUR Stepwise ACTIVE | ROI-EIRGRID DA

Import Bid | Export Bid | Delete | Differences: 1

No errors

Order - 4000002045657 - 60 min

Submit Several Delivery Days

Fixed Term: 1 | Schedule Stop Periods: 0 | Increase Gradient: | Decrease Gradient: |

User Comment:

Comment	Period (gmt/bs)	MAV	500.00	-108.10	-108.10	1,910.90	1,910.90	2,488.10	2,488.10	4,000.00
	23 - 00	60.0	-60.0	-60.0	-82.8	-82.8	-150.6	-150.6	-190.0	-190.0
	00 - 01	10.0	-10.0	-10.0	-15.4	-15.4	-55.1	-55.1	-80.0	-80.0
	01 - 02	60.0	-60.0	-60.0	-60.6	-60.6	-125.5	-125.5	-140.0	-140.0
	02 - 03	60.0	-60.0	-60.0	-80.8	-80.8	-97.2	-97.2	-174.0	-174.0
	03 - 04	60.0	-60.0	-60.0	-71.3	-71.3	-136.4	-136.4	-137.8	-137.8
	04 - 05	60.0	-60.0	-60.0	-118.1	-118.1	-120.8	-120.8	-180.2	-180.2
	05 - 06	60.0	-60.0	-60.0	-65.4	-65.4	-115.5	-115.5	-175.0	-175.0
	06 - 07	30.0	-30.0	-30.0	-34.1	-34.1	-99.4	-99.4	-111.2	-111.2
	07 - 08	60.0	-60.0	-60.0	-77.0	-77.0	-86.7	-86.7	-178.4	-178.4
	08 - 09	60.0	-60.0	-60.0	-124.9	-124.9	-134.9	-134.9	-186.6	-186.6
	09 - 10	60.0	-60.0	-60.0	-109.0	-109.0	-142.1	-142.1	-150.6	-150.6
	10 - 11	10.0	-10.0	-10.0	-10.7	-10.7	-95.0	-95.0	-196.7	-196.7
	11 - 12	60.0	-60.0	-60.0	-102.4	-102.4	-114.1	-114.1	-151.7	-151.7
	12 - 13	40.0	-40.0	-40.0	-41.6	-41.6	-55.6	-55.6	-168.5	-168.5
	13 - 14	60.0	-60.0	-60.0	-101.0	-101.0	-137.9	-137.9	-146.0	-146.0
	14 - 15	60.0	-60.0	-60.0	-116.3	-116.3	-136.2	-136.2	-197.1	-197.1
	15 - 16	60.0	-60.0	-60.0	-100.3	-100.3	-112.2	-112.2	-146.6	-146.6
	16 - 17	60.0	-60.0	-60.0	-71.8	-71.8	-84.6	-84.6	-162.2	-162.2
	17 - 18	60.0	-60.0	-60.0	-60.1	-60.1	-119.4	-119.4	-134.4	-134.4
	18 - 19	60.0	-60.0	-60.0	-109.1	-109.1	-130.9	-130.9	-199.6	-199.6
	19 - 20	60.0	-60.0	-60.0	-78.9	-78.9	-105.9	-105.9	-192.2	-192.2
	20 - 21	30.0	-30.0	-30.0	-32.6	-32.6	-109.2	-109.2	-133.5	-133.5
	21 - 22	40.0	-40.0	-40.0	-46.3	-46.3	-68.1	-68.1	-118.8	-118.8
	22 - 23	60.0	-60.0	-60.0	-107.5	-107.5	-135.6	-135.6	-137.8	-137.8
	Sum		-1,240.0	-1,240.0	-1,818.0	-1,818.0	-2,668.9	-2,668.9	-3,788.9	-3,788.9

Variable Term Removed

Increase Gradient & Decrease Gradient values are optional values

In this particular example:

- the MAV value is entered into ETS as a positive value (absolute value) but the negative value will be used in the system
- The MAV value does not need to equal the lowest volume, however it must be between 1 and 190 for Trading Period #1

MAV:

- Is a mandatory value for every Trading Period
- Must be positive
- Cannot leave blank

Modify Scalable Complex Orders

Auction Date Time: 13 May 2022 - 12:00 cet/cest | Auction Name: PWR-MRC-D+1 | Delivery Date: 14 May 2022 | Area: ROI-EIRGRID-DA | Portfolio: GU_402250 | Duration: 60 min

EUR ROI-EIRGRID | Stepwise ACTIVE | DA

Import Bid | Export Bid | **Differences** | Submit

No errors

Order - 40000002045657 - 60 min

Submit Several Delivery Days

Fixed Term: 1 | Schedule Stop Periods: 0 | Increase Gradient: | Decrease Gradient: |

User Comment: |

Comment	P	V	P	V	P	V	P	V	P	V
23 - 00	60.0	-60.0	-60.0	-82.8	-82.8	-150.6	-150.6	-190.0	-190.0	
00 - 01	10.0	-10.0	-10.0	-15.4	-15.4	-55.1	-55.1	-80.0	-80.0	
01 - 02	60.0	-60.0	-60.0	-60.6	-60.6	-125.5	-125.5	-140.0	-140.0	
02 - 03	60.0	-60.0	-60.0	-80.8	-80.8	-97.2	-97.2	-174.0	-174.0	
03 - 04	60.0	-60.0	-60.0	-71.3	-71.3	-136.4	-136.4	-137.8	-137.8	
04 - 05	60.0	-60.0	-60.0	-118.1	-118.1	-120.8	-120.8	-180.2	-180.2	
05 - 06	60.0	-60.0	-60.0	-65.4	-65.4	-115.5	-115.5	-175.0	-175.0	
06 - 07	30.0	-30.0	-30.0	-34.1	-34.1	-99.4	-99.4	-111.2	-111.2	
07 - 08	60.0	-60.0	-60.0	-77.0	-77.0	-86.7	-86.7	-178.4	-178.4	
08 - 09	60.0	-60.0	-60.0	-124.9	-124.9	-134.9	-134.9	-186.6	-186.6	
09 - 10	60.0	-60.0	-60.0	-109.0	-109.0	-142.1	-142.1	-150.6	-150.6	
10 - 11	10.0	-10.0	-10.0	-10.7	-10.7	-95.0	-95.0	-196.7	-196.7	
11 - 12	60.0	-60.0	-60.0	-102.4	-102.4	-114.1	-114.1	-151.7	-151.7	
12 - 13	40.0	-40.0	-40.0	-41.6	-41.6	-55.6	-55.6	-168.5	-168.5	
13 - 14	60.0	-60.0	-60.0	-101.0	-101.0	-137.9	-137.9	-146.0	-146.0	
14 - 15	60.0	-60.0	-60.0	-116.3	-116.3	-136.2	-136.2	-197.1	-197.1	
15 - 16	60.0	-60.0	-60.0	-100.3	-100.3	-112.2	-112.2	-146.6	-146.6	
16 - 17	60.0	-60.0	-60.0	-71.8	-71.8	-84.6	-84.6	-162.2	-162.2	
17 - 18	60.0	-60.0	-60.0	-60.1	-60.1	-119.4	-119.4	-134.4	-134.4	
18 - 19	60.0	-60.0	-60.0	-109.1	-109.1	-130.9	-130.9	-199.6	-199.6	
19 - 20	60.0	-60.0	-60.0	-78.9	-78.9	-105.9	-105.9	-192.2	-192.2	
20 - 21	30.0	-30.0	-30.0	-32.6	-32.6	-109.2	-109.2	-133.5	-133.5	
21 - 22	40.0	-40.0	-40.0	-46.3	-46.3	-68.1	-68.1	-118.8	-118.8	
22 - 23	60.0	-60.0	-60.0	-107.5	-107.5	-135.6	-135.6	-137.8	-137.8	
Sum		-1,240.0	-1,240.0	-1,818.0	-1,818.0	-2,668.9	-2,668.9	-3,788.9	-3,788.9	

Following on from instructions on slide 28, choose complex order you wish to modify. Update the trading periods volumes/prices you wish to modify within the cell/s. Select "Differences" and then select "Submit".

Cancel Scalable Complex Orders

Auction Date Time: 13 May 2022 - 12:00 cet/cest | Auction Name: PWR-MRC-D+1 | Delivery Date: 14 May 2022 | Area: ROI-EIRGRID-DA | Portfolio: GU_402250 | Duration: 60 min

EUR Stepwise ROI-EIRGRID DA ACTIVE

Import Bid | Export Bid | **Delete** | Differences: 1

No errors

Order - 40000002045657 - 60 min

Submit Several Delivery Days

Fixed Term: 1 | Schedule Stop Periods: 0 | Increase Gradient: [v] | Decrease Gradient: [v]

User Comment: []

Comment	Period (unit/h)	MAV	500.00	100.10	100.10	1,910.90	1,910.90	2,488.10	2,488.10	4,000.00
23 - 00	60.0	-60.0	-60.0	-60.0	-82.8	-82.8	-150.6	-150.6	-190.0	-190.0
00 - 01	60.0	-60.0	-60.0	-60.0	-82.8	-82.8	-150.6	-150.6	-190.0	-190.0
01 - 02	60.0	-60.0	-60.0	-60.0	-60.6	-60.6	-125.5	-125.5	-140.0	-140.0
02 - 03	60.0	-60.0	-60.0	-60.0	-80.8	-80.8	-97.2	-97.2	-174.0	-174.0
03 - 04	60.0	-60.0	-60.0	-60.0	-71.3	-71.3	-136.4	-136.4	-137.8	-137.8
04 - 05	60.0	-60.0	-60.0	-60.0	-118.1	-118.1	-120.8	-120.8	-180.2	-180.2
05 - 06	60.0	-60.0	-60.0	-60.0	-65.4	-65.4	-115.5	-115.5	-175.0	-175.0
06 - 07	30.0	-30.0	-30.0	-30.0	-34.1	-34.1	-99.4	-99.4	-111.2	-111.2
07 - 08	60.0	-60.0	-60.0	-60.0	-77.0	-77.0	-86.7	-86.7	-178.4	-178.4
08 - 09	60.0	-60.0	-60.0	-60.0	-124.9	-124.9	-134.9	-134.9	-186.6	-186.6
09 - 10	60.0	-60.0	-60.0	-60.0	-109.0	-109.0	-142.1	-142.1	-150.6	-150.6
10 - 11	10.0	-10.0	-10.0	-10.0	-10.7	-10.7	-95.0	-95.0	-196.7	-196.7
11 - 12	60.0	-60.0	-60.0	-60.0	-102.4	-102.4	-114.1	-114.1	-151.7	-151.7
12 - 13	40.0	-40.0	-40.0	-40.0	-41.6	-41.6	-55.6	-55.6	-168.5	-168.5
13 - 14	60.0	-60.0	-60.0	-60.0	-101.0	-101.0	-137.9	-137.9	-146.0	-146.0
14 - 15	60.0	-60.0	-60.0	-60.0	-116.3	-116.3	-136.2	-136.2	-197.1	-197.1
15 - 16	60.0	-60.0	-60.0	-60.0	-100.3	-100.3	-112.2	-112.2	-146.6	-146.6
16 - 17	60.0	-60.0	-60.0	-60.0	-71.8	-71.8	-84.6	-84.6	-162.2	-162.2
17 - 18	60.0	-60.0	-60.0	-60.0	-60.1	-60.1	-119.4	-119.4	-134.4	-134.4
18 - 19	60.0	-60.0	-60.0	-60.0	-109.1	-109.1	-130.9	-130.9	-199.6	-199.6
19 - 20	60.0	-60.0	-60.0	-60.0	-78.9	-78.9	-105.9	-105.9	-192.2	-192.2
20 - 21	30.0	-30.0	-30.0	-30.0	-32.6	-32.6	-109.2	-109.2	-133.5	-133.5
21 - 22	40.0	-40.0	-40.0	-40.0	-46.3	-46.3	-68.1	-68.1	-118.8	-118.8
22 - 23	60.0	-60.0	-60.0	-60.0	-107.5	-107.5	-135.6	-135.6	-137.8	-137.8
Sum			-1,240.0	-1,240.0	-1,818.0	-1,818.0	-2,668.9	-2,668.9	-3,788.9	-3,788.9

Following on from instructions on slide 28, choose the complex order you wish to delete. Select “Delete” and then select “Submit”.

Market Results pop-up

- ❑ Preliminary results
(for coupled auctions only)

Period	NCP (GBP)
Baseload	36.084
Peakload	38.315
Total Turnov	104,158.600

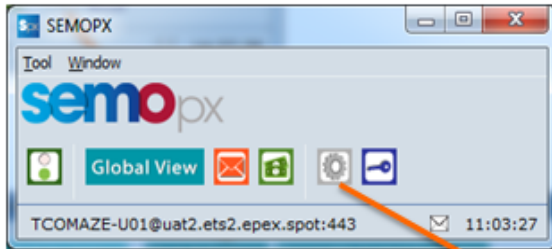
Period	NCP (EUR)
Baseload	40.973
Peakload	43.507
Total Turnov	104,158.600

- ❑ Final results
(for both coupled and local auctions)

Period	NCP (GBP)
Baseload	36.084
Peakload	38.315
Total Turnov	104,158.600

Period	NCP (EUR)
Baseload	40.973
Peakload	43.507
Total Turnov	104,158.600

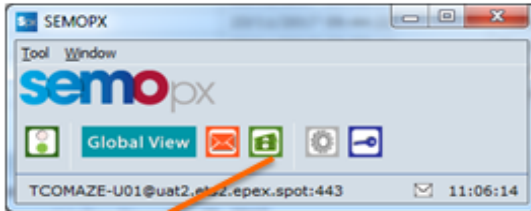
Define Reasonable Control Parameters



The screenshot shows the "User Reasonable Control Parameters [Settings]" window. The title bar reads "User Reasonable Control Parameters [Settings]". Below the title bar is a menu bar with "File", "Format", "Window", and "Help". The SEMOPX logo is in the top right corner. Below the menu bar are tabs for "Global Settings", "Modules Settings", "Block Definitions", and "Reasonable Control Parameters" (which is selected). Below the tabs is a table titled "Reasonable Control Parameters". The table has columns for "Area", "Portfolio", "Duration", "Volume difference at Pmin", "Volume difference at Pmax", "Order side change at Pmin", "Order side change at Pmax", and "Control". There are also "Import from Excel" and "Export to Excel" buttons in the top right corner of the table area. At the bottom of the window, there are "Reset" and "Update" buttons and the user information "TCOMAZE-U01@uat2.ets2.epex.spot:443" and the time "23:51:10".

Area	Portfolio	Duration	Volume difference at Pmin	Volume difference at Pmax	Order side change at Pmin	Order side change at Pmax	Control
NI-SONI-DA	COMPANYA-T01	60 min			▼	▼	
NI-SONI-IDA1	COMPANYA-T01	30 min			▼	▼	
NI-SONI-IDA2	COMPANYA-T01	30 min			▼	▼	
NI-SONI-IDA3	COMPANYA-T01	30 min			▼	▼	
ROI-EIRGRID-DA	COMPANYA-T01	60 min			▼	▼	
ROI-EIRGRID-IDA1	COMPANYA-T01	30 min			▼	▼	
ROI-EIRGRID-IDA2	COMPANYA-T01	30 min			▼	▼	
ROI-EIRGRID-IDA3	COMPANYA-T01	30 min			▼	▼	

Check Trading Limits



Financial Trading Limits Monitor - My view (Financial)

Trading Limit Day: 24/11/2017

Exchange: All | Central Counter Party: All

Filters: Settlement Member: COMPA_SM | Area: NI-SONI-DA, NI-SONI-IDA1, NI-SONI-IDA2, NI-SONI-IDA3, R00-EIRGR1D-DA, R00-EIRGR1D-IDA1, R00-EIRGR1D-IDA2, R00-EIRGR1D-IDA3 | Portfolio: COMPANYS-T01

Reset Selections

Id	Version	Exchange	CCP Id	CCP Version	EL Status	Currency	Initial Value	Current Value	Exposure	Min Price	Max Price	Analysitic Min Price	Analysitic Max Price	Creator	Instrument
84	1	SEMOPX	-1	All	Created	EUR	10000000	9940000	60000			0	50	ClearingMember	
86	1	SEMOPX	-1	All	Created	GBP	10000000	9940000	60000			0	50	ClearingMember	

Trading Limit Usage

Settlement Member: All | Participant: All | Portfolio: All | Area: All

TCOMAZE-U01@uat2.ets2.epex.spot:443 11:07:46

6 Trading on behalf forms (ToB)/Submission On Behalf Tool (SOBT)

- **SOBT** : Submission on Behalf of Trading Tool was decommissioned on the 14th September 2021. For further information please see market message [here](#).
- **ToB** : Excel backup forms are available [here](#) on the website to be sent back by email in case of connection issues **on member side**. The ToB service is available for the DAM, IDA1, IDA2 and IDA3. Orders are entered on the member's behalf, *on a best efforts basis*.
- Further information on ToB please see market message [here](#)

7 ETS Reporting capabilities

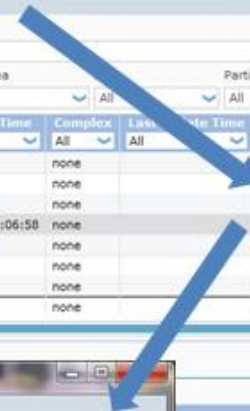
Market Global View - Factory View [Epex Trading System]

Day Type: Auction Day

From Date: 27/07/2017

Auction Status: All | Auction Group: All | Auction Name: All | Market Area: All | Participant: All

Time	Order Book Status	Duration	Currency	Linear	Last Update Time	Block	Last Update Time	Complex	Linear	Time	Mkt Results
2017-07-27-12:00	OBK Closed	60 min	GBP	none		none		none			Available
2017-07-27-12:00	OBK Closed	60 min	GBP	none		none		none			Available
2017-07-27-12:00	OBK Closed	60 min	GBP	none		none		none			Available
2017-07-27-16:30	OBK Closed	30 min	GBP	Exists	26/07/2017 10:47:36	Exists	26/07/2017 11:06:50	none			Available
2017-07-27-16:30	OBK Closed	30 min	GBP	none		none		none			Available
2017-07-27-16:30	OBK Closed	30 min	GBP	none		none		none			Available
2017-07-27-16:30	OBK Closed	30 min	GBP	none		none		none			Available
2017-07-27-09:00	OBK Open	30 min	GBP	none		none		none			none



Market Results - Factory View [Epex Trading System]

Overall | Block | Complex

Day Type: Auction Day

From Date: 27/07/2017 | Area Set: SEMO IDA1 | Auction Name: SemoID-16.30 | Area: NI-SONI-IDA1 | Duration: 30 min | Participant: A2A | Portfolio: A2A-T01 | Currency: GBP

Export To Excel | Export Single To CSV | Export All To CSV

Portfolio: A2A-T01

Period (CET)	MCP	MCV	Net	Total Schedule			Linear Schedule			Block Schedule			Complex Schedule		
				Purchase	Sale	Net	Purchase	Sale	Net	Purchase	Sale	Net	Purchase	Sale	
00:00 - 00:30	1099.577762139338494	1.0	0.0	1.0	1.0	1.0	0.0	0.0	-1.0	0.0	1.0	0.0	0.0	0.0	0.0
00:30 - 01:00	1099.577762139338494	1.0	-1.0	0.0	1.0	0.0	0.0	0.0	-1.0	0.0	1.0	0.0	0.0	0.0	0.0
01:00 - 01:30	1099.577762139338494	0	0.0	0.0	0.0	0.0	0.0	0.0	0.0	0.0	0.0	0.0	0.0	0.0	0.0
01:30 - 02:00	1099.577762139338494	0	0.0	0.0	0.0	0.0	0.0	0.0	0.0	0.0	0.0	0.0	0.0	0.0	0.0
02:00 - 02:30	1099.577762139338494	0	0.0	0.0	0.0	0.0	0.0	0.0	0.0	0.0	0.0	0.0	0.0	0.0	0.0
02:30 - 03:00	1099.577762139338494	0	0.0	0.0	0.0	0.0	0.0	0.0	0.0	0.0	0.0	0.0	0.0	0.0	0.0
03:00 - 03:30	1099.577762139338494	0	0.0	0.0	0.0	0.0	0.0	0.0	0.0	0.0	0.0	0.0	0.0	0.0	0.0
03:30 - 04:00	1099.577762139338494	0	0.0	0.0	0.0	0.0	0.0	0.0	0.0	0.0	0.0	0.0	0.0	0.0	0.0
04:00 - 04:30	1099.577762139338494	0	0.0	0.0	0.0	0.0	0.0	0.0	0.0	0.0	0.0	0.0	0.0	0.0	0.0
04:30 - 05:00	1099.577762139338494	0	0.0	0.0	0.0	0.0	0.0	0.0	0.0	0.0	0.0	0.0	0.0	0.0	0.0
05:00 - 05:30	1099.577762139338494	0	0.0	0.0	0.0	0.0	0.0	0.0	0.0	0.0	0.0	0.0	0.0	0.0	0.0
05:30 - 06:00	1099.577762139338494	0	0.0	0.0	0.0	0.0	0.0	0.0	0.0	0.0	0.0	0.0	0.0	0.0	0.0
06:00 - 06:30	1099.577762139338494	0	0.0	0.0	0.0	0.0	0.0	0.0	0.0	0.0	0.0	0.0	0.0	0.0	0.0
06:30 - 07:00	1099.577762139338494	0	0.0	0.0	0.0	0.0	0.0	0.0	0.0	0.0	0.0	0.0	0.0	0.0	0.0
07:00 - 07:30	1099.577762139338494	0	0.0	0.0	0.0	0.0	0.0	0.0	0.0	0.0	0.0	0.0	0.0	0.0	0.0
07:30 - 08:00	1099.577762139338494	0	0.0	0.0	0.0	0.0	0.0	0.0	0.0	0.0	0.0	0.0	0.0	0.0	0.0

These results are Final

SEMOTRADER001@sepwets411:443 11:20:45