

May 2022 Report



Traded (GWh)

YTD 22	20,535	
YTD 21	19,961	▲ 3%
May 22	3,812	▼ 4%
May 21	3,980	

May 22	3,812	▼ 2%
April 22	3,881	



Traded (million€)

€ 4,365.55	▲ 169%
€ 1,620.90	
€ 554.97	▲ 40%
€ 396.54	

€ 554.97	▼ 36%
€ 860.95	

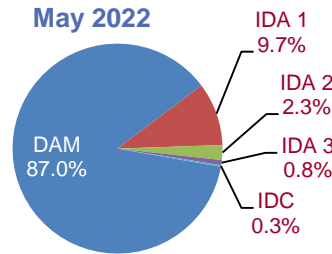
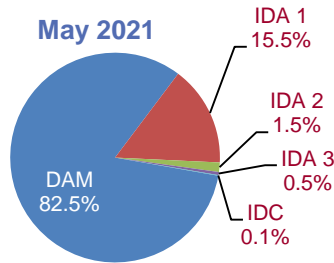


DAM AVG. (€/MWh)

€ 206.23	▲ 164%
€ 78.19	
€ 143.16	▲ 48%
€ 96.73	

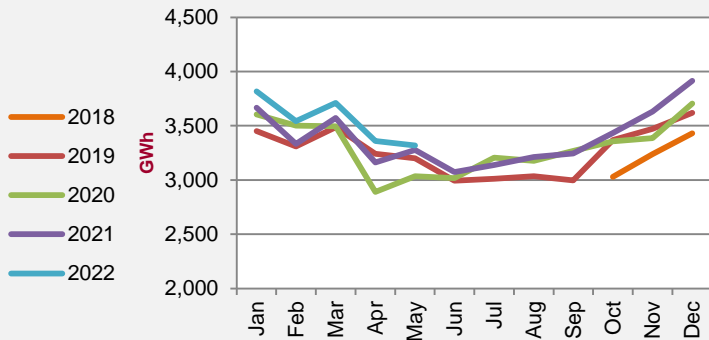
€ 143.16	▼ 34%
€ 218.53	

Share of Traded Volumes by Market (%)

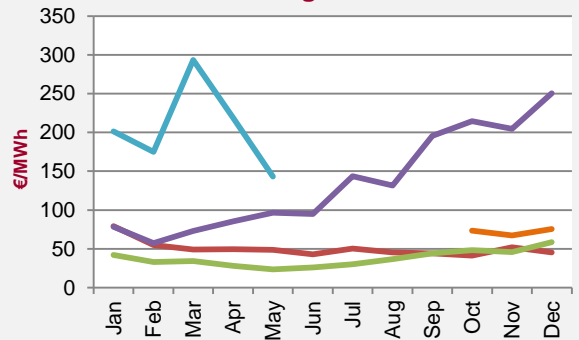


Day-Ahead Market (DAM)

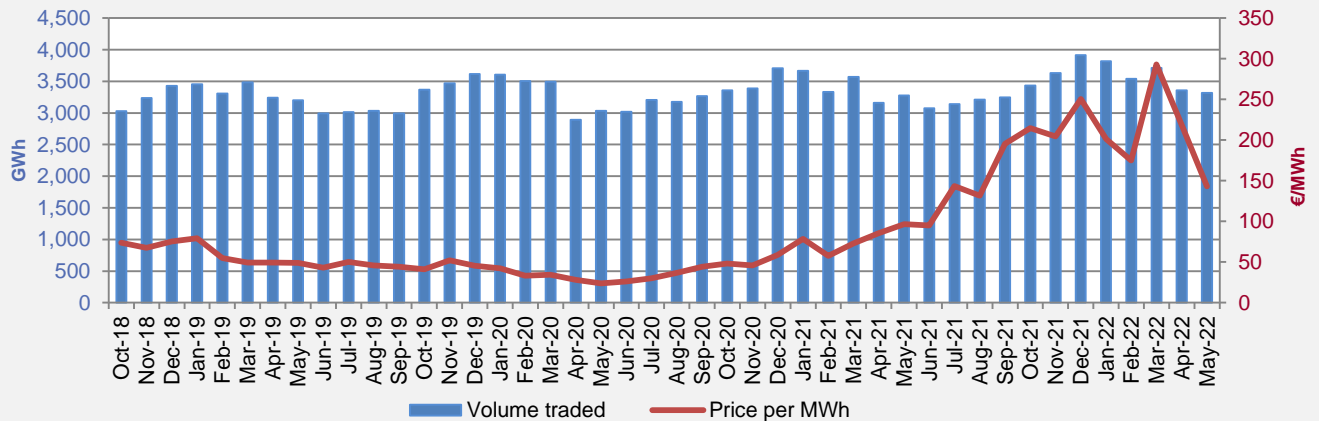
Volume Traded



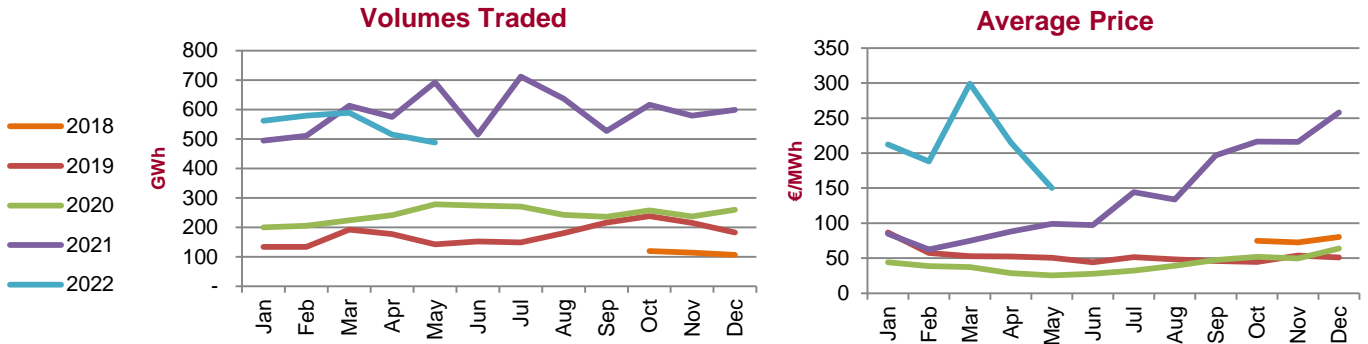
Average Price



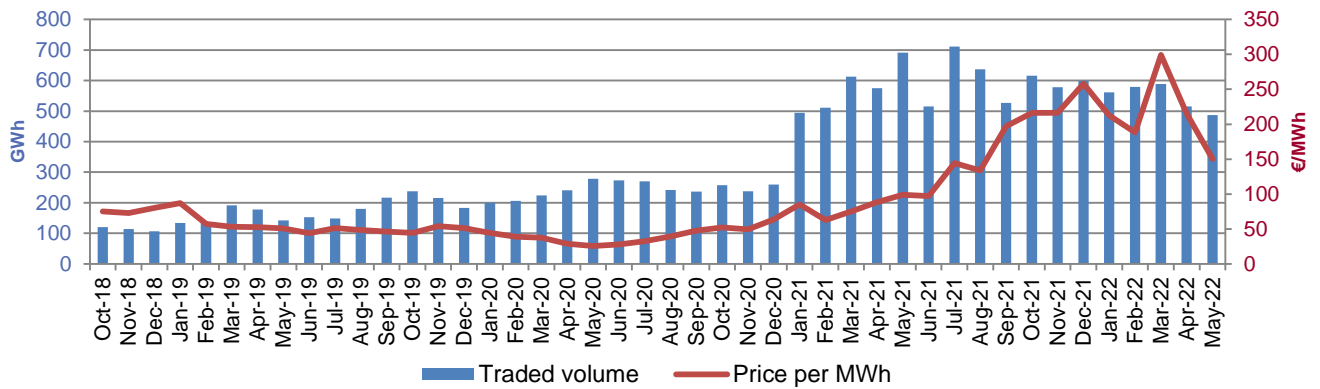
Volume Traded vs Average Price



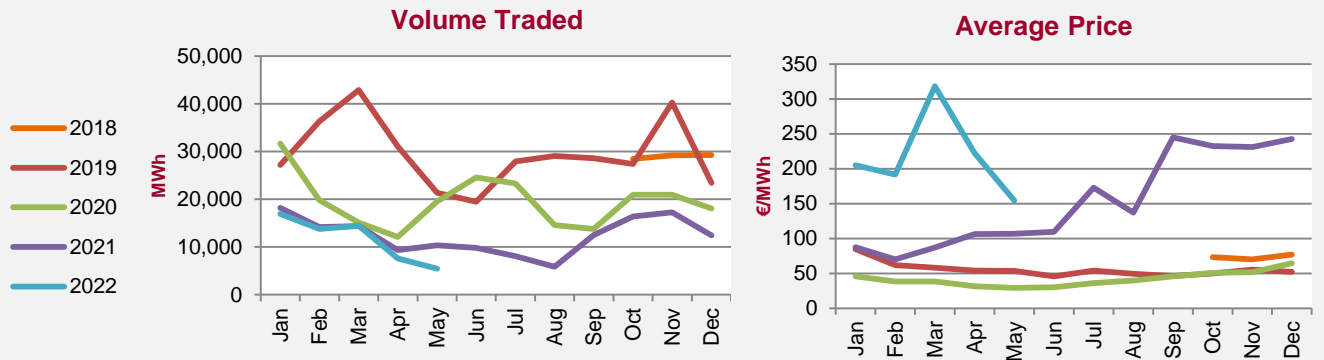
Intraday Market (IDA)



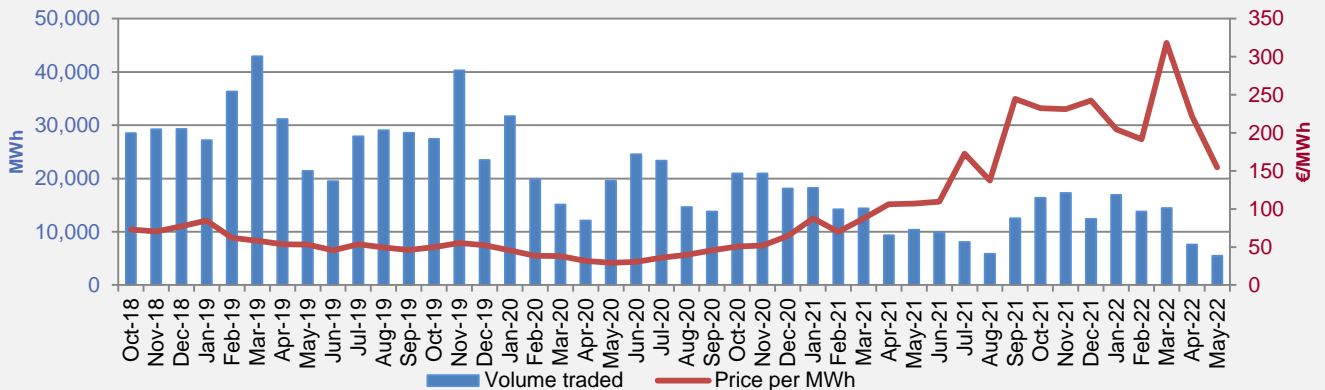
Volume Traded vs Average Price



Intraday Continuous (IDC)



Volume Traded vs Average Price



Telephone:

Ireland 1800 283 010
 Northern Ireland 0800 008 3010
 International +353 1 6688183

Email:

info@semopx.com

Website:

www.semopx.com