

POWER EXCHANGE

Providing Day-Ahead and Intraday Trading Services for the Single Electricity Market

Year To Date

Year of Trades	Traded (GWh)	Traded (million€)	Avg. DAM (€/MWh)
2022	48,518	€11,136	€226.19
2023	49,644	€6,226	€121.91
	2.32%	-44.09%	-46.10%

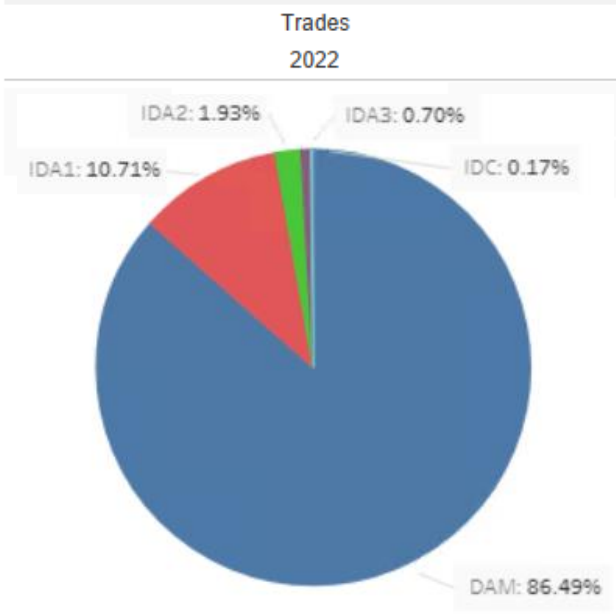
Last Year Comparison

Year of Trades	Month of Trades	Traded (GWh)	Traded (million€)	Avg. DAM (€/MWh)
2022	December	4,467	€1,281	€276.52
2023	December	4,359	€410	€88.97
		-2.42%	-67.97%	-67.82%

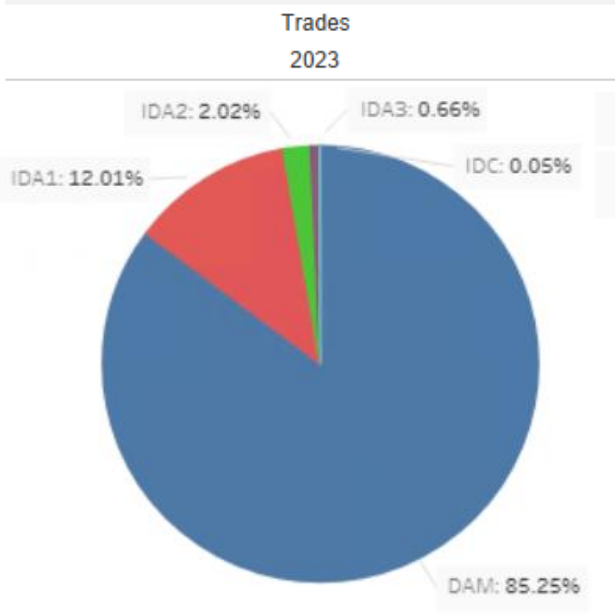
Last Month Comparison

Year of Trades	Month of Trades	Traded (GWh)	Traded (million€)	Avg. DAM (€/MWh)
2023	November	4,416	€561	€122.90
	December	4,359	€410	€88.97
		-1.28%	-26.91%	-27.61%

Volumes Last Year



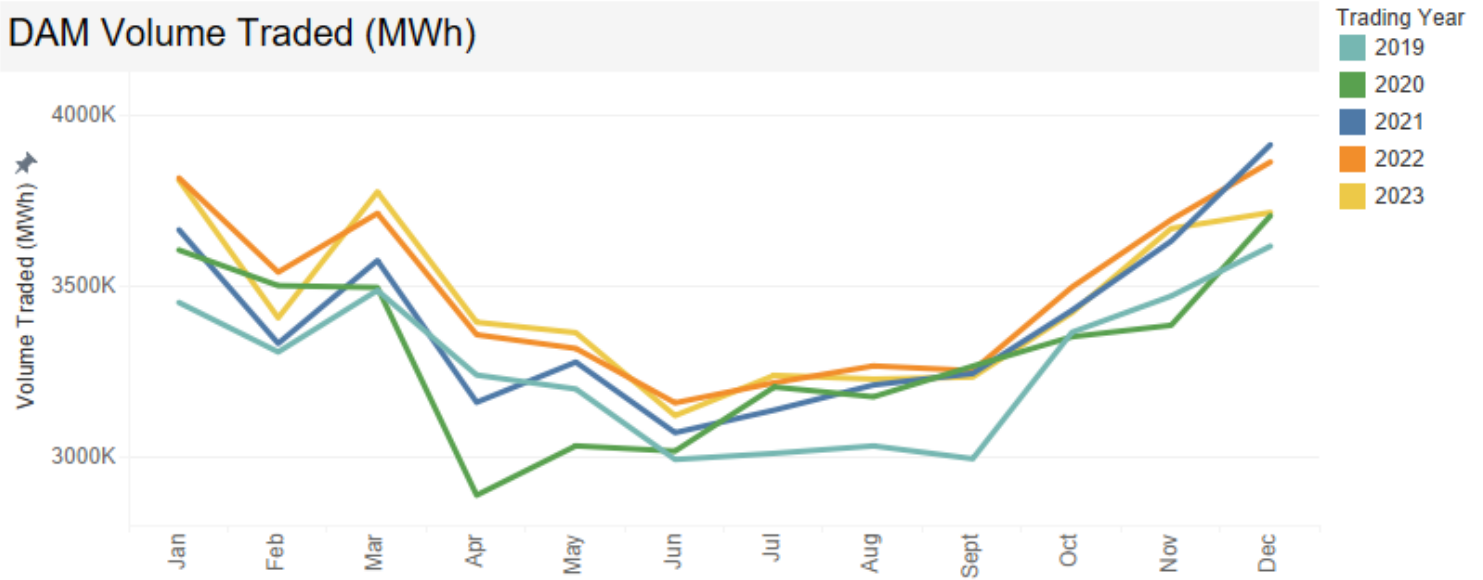
Volumes Current Year



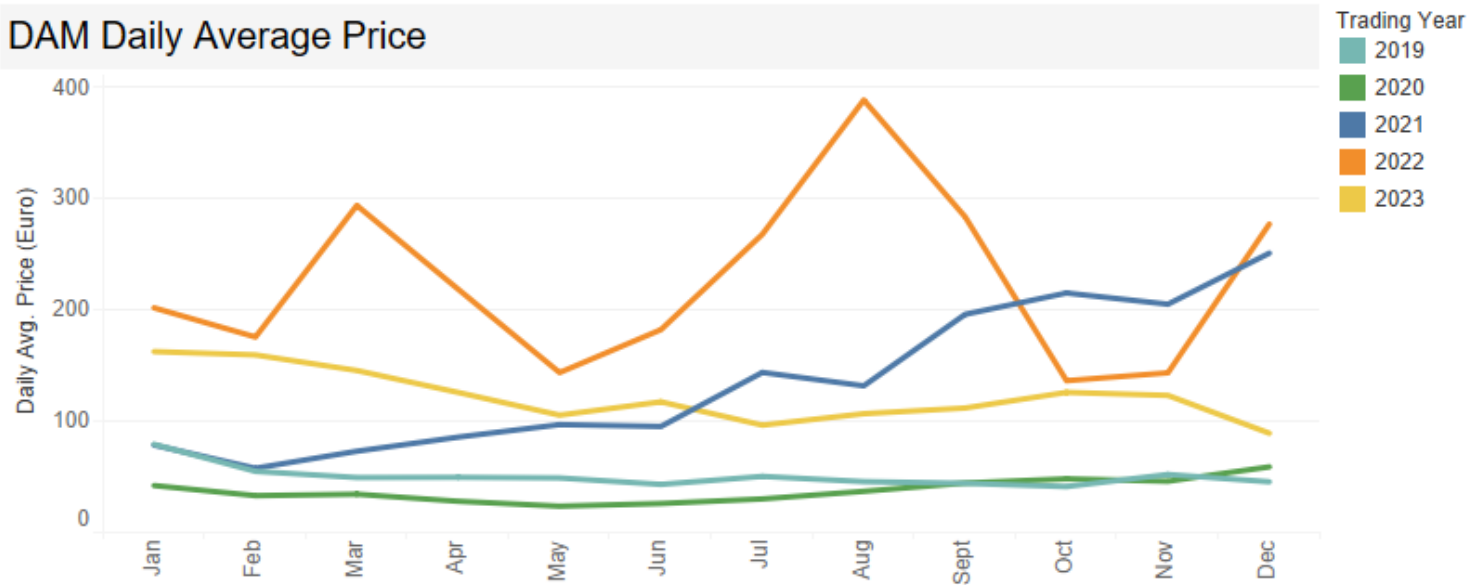
Trading Market

- DA
- IDA1
- IDA2
- IDA3
- IDC

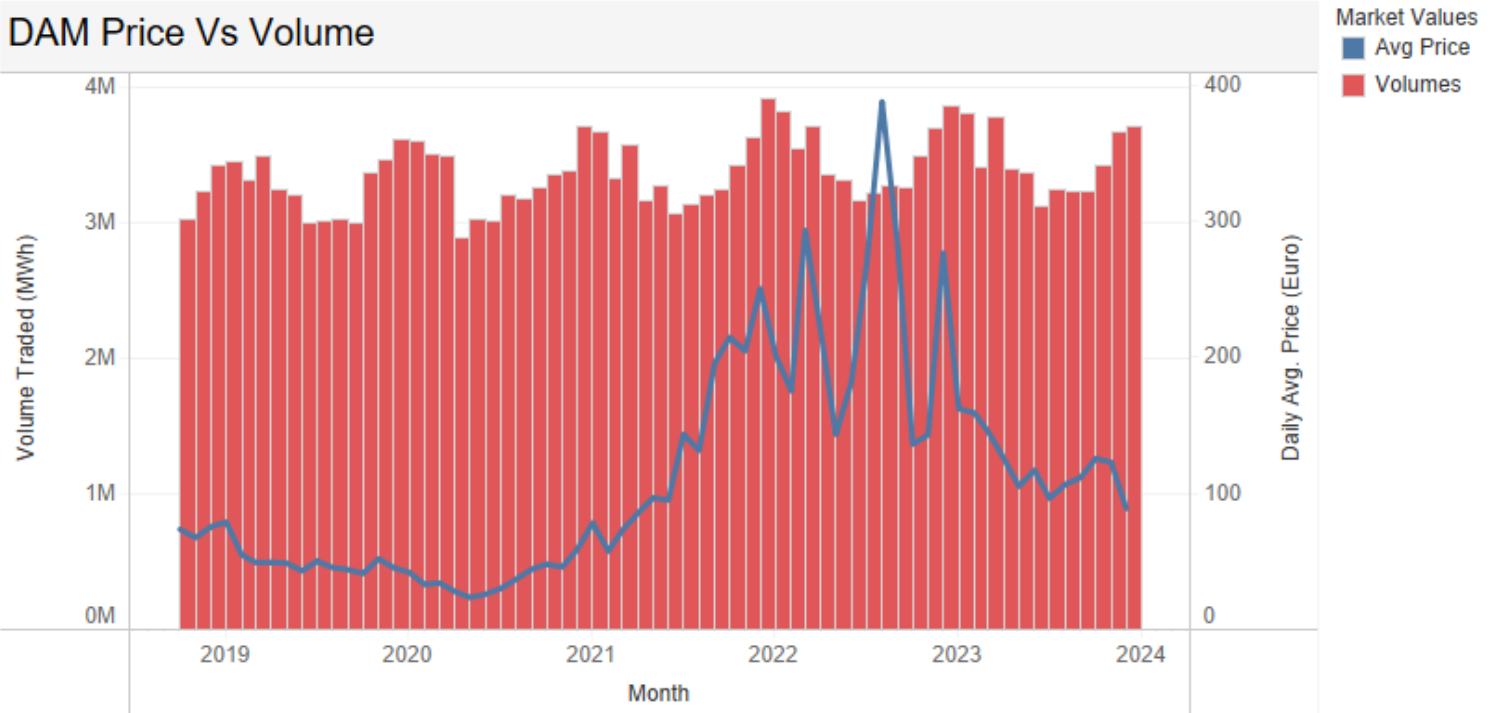
DAM Volume Traded (MWh)



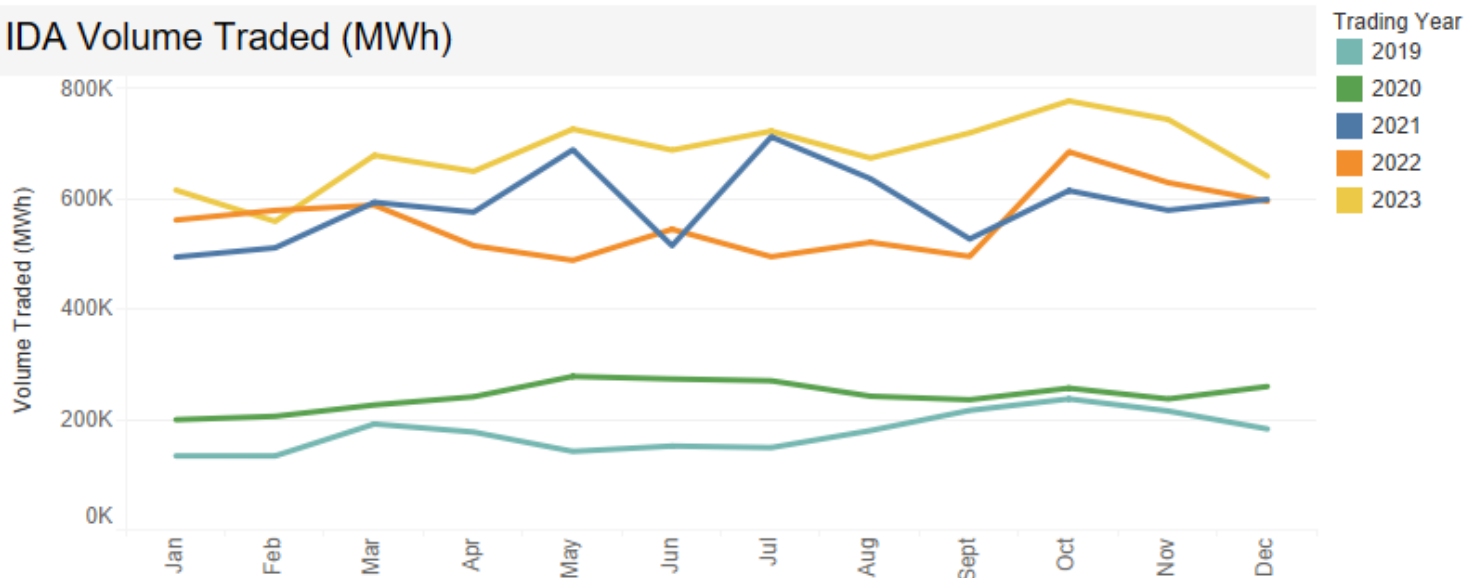
DAM Daily Average Price



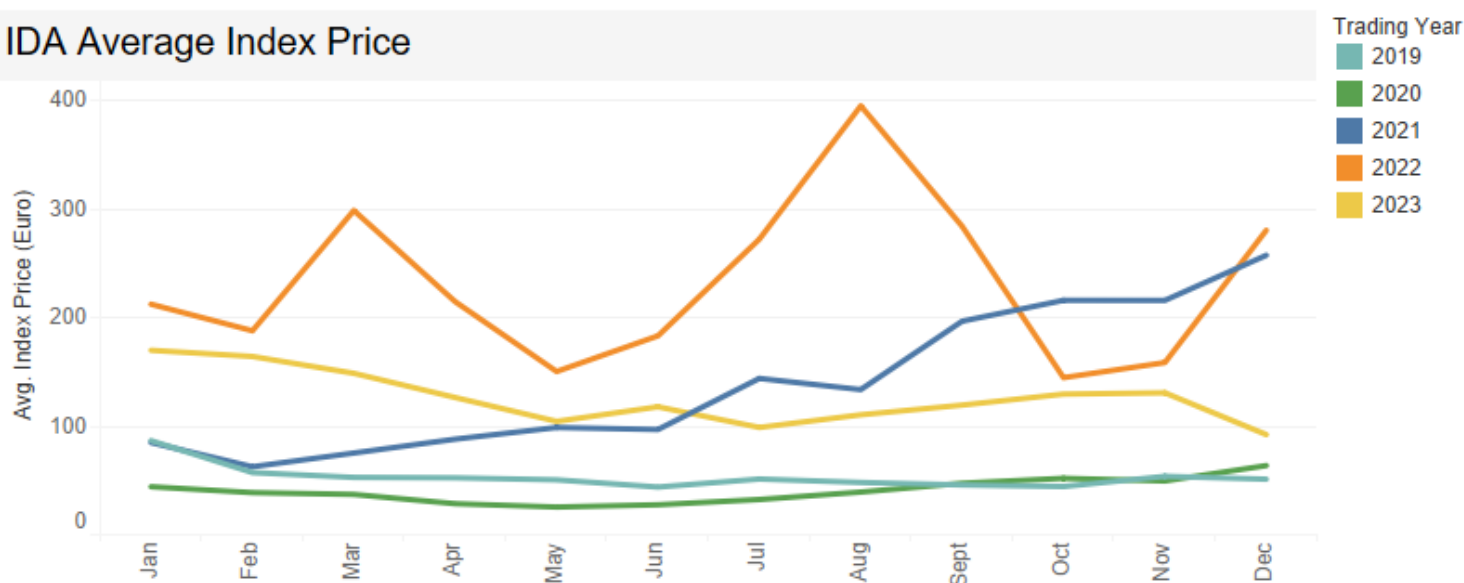
DAM Price Vs Volume



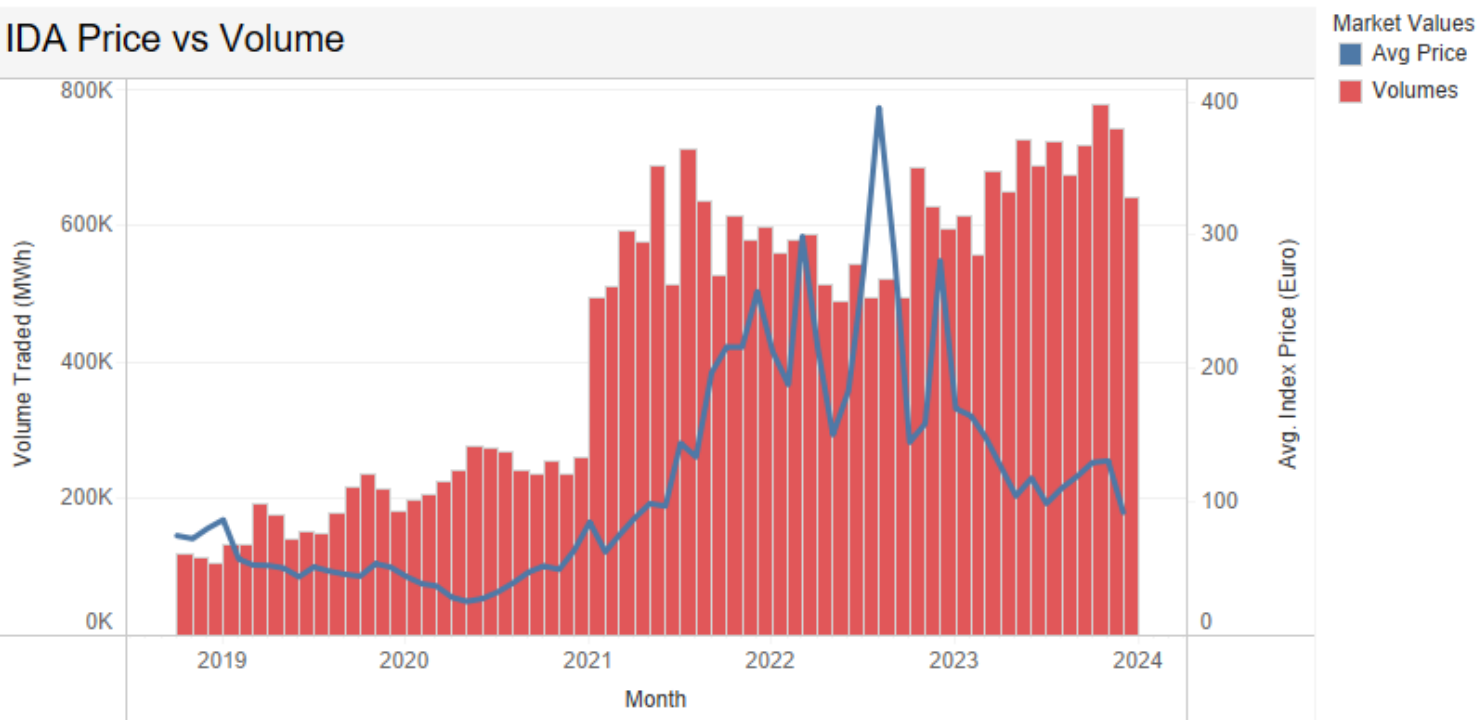
IDA Volume Traded (MWh)



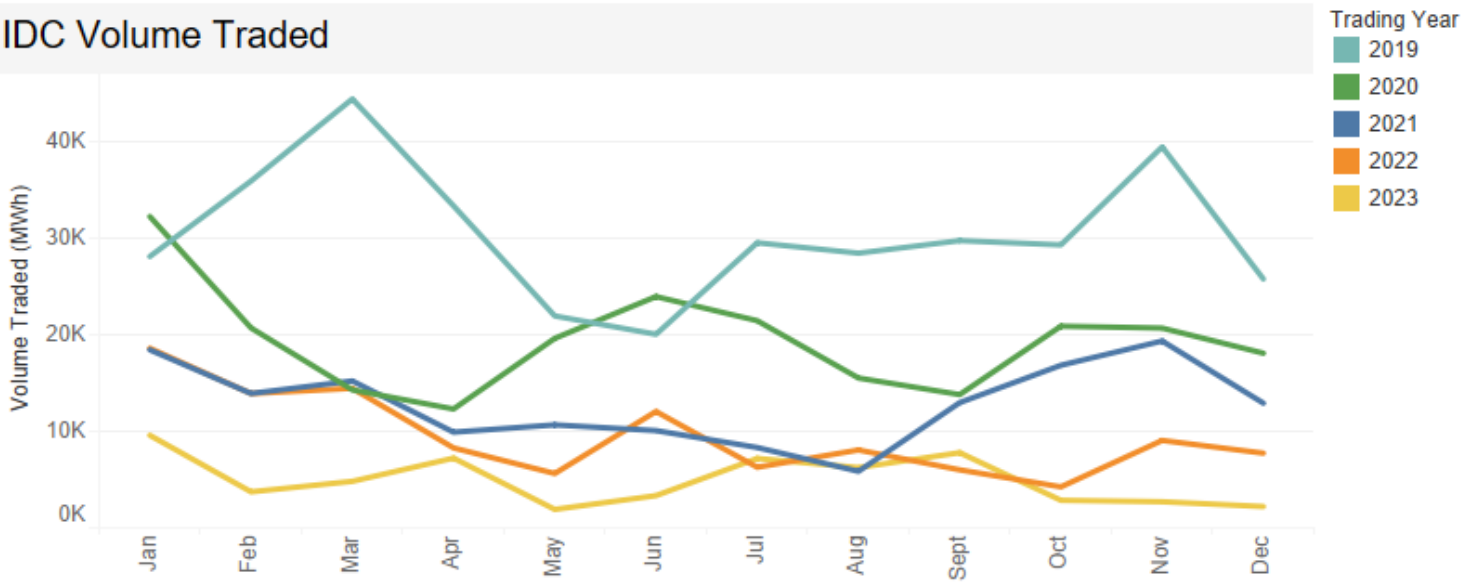
IDA Average Index Price



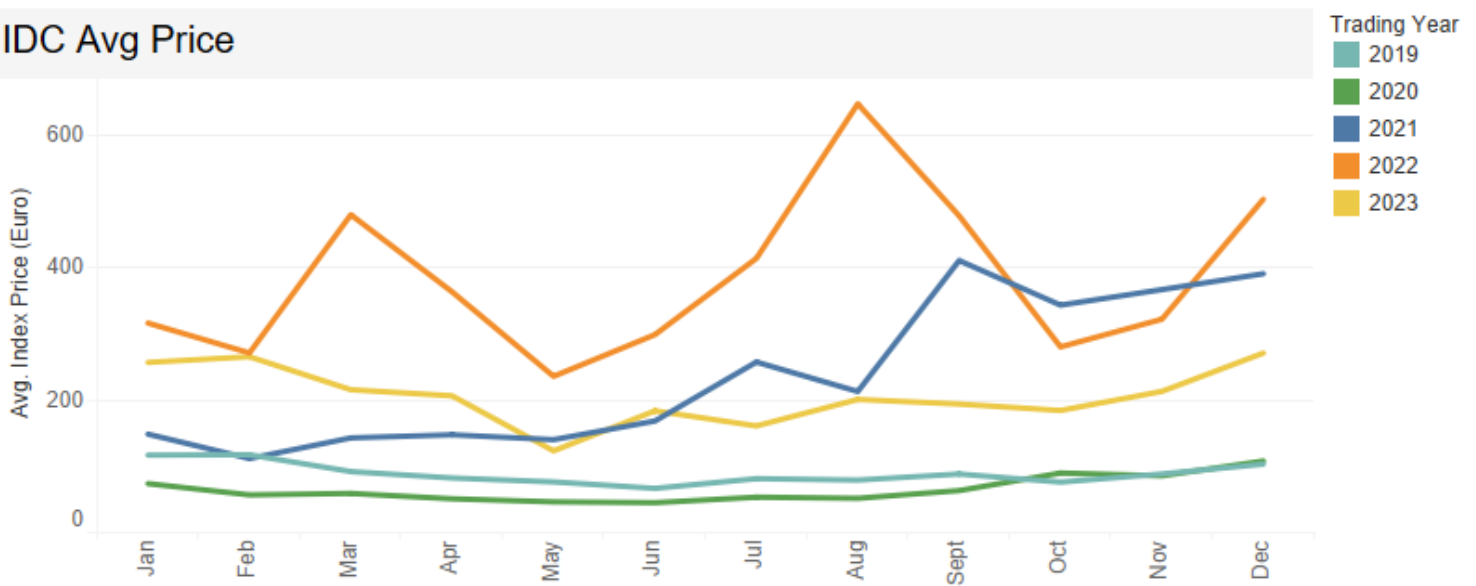
IDA Price vs Volume



IDC Volume Traded



IDC Avg Price



IDC Volume Traded Vs Avg Price

