

## POWER EXCHANGE

Providing Day-Ahead and Intraday Trading Services for the Single Electricity Market

### Year To Date

Year of Trades	Traded (GWh)	Traded (million€)	Avg. DAM (€/MWh)
2024	8,894	€855	€92.51
2025	9,286	€1,489	€154.86
	4.41%	74.24%	67.39%

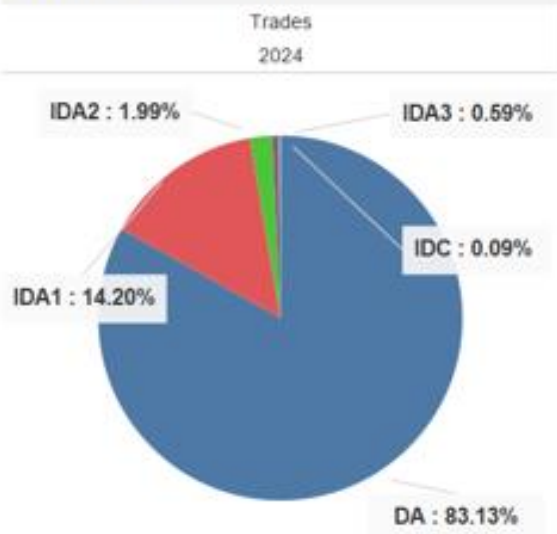
### Last Year Comparison

Year of Trades	Month of Trades	Traded (GWh)	Traded (million€)	Avg. DAM (€/MWh)
2024	February	4,266	€375	€84.61
2025	February	4,413	€636	€140.85
		3.45%	69.46%	66.46%

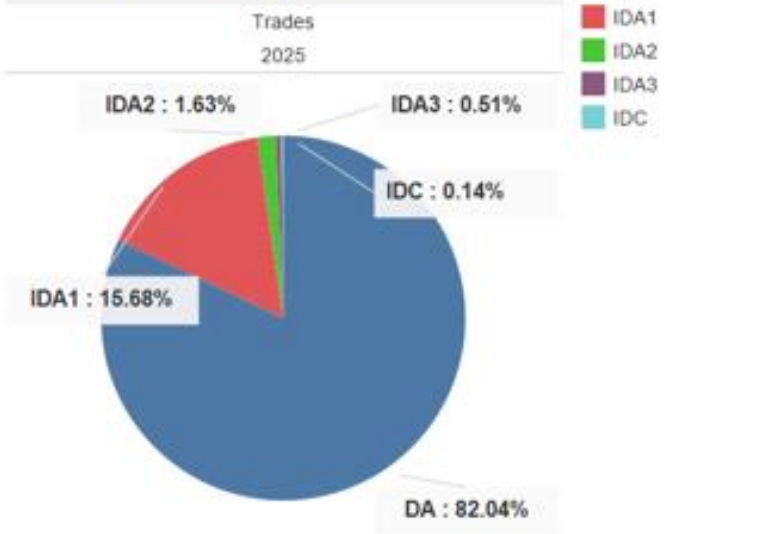
### Last Month Comparison

Year of Trades	Month of Trades	Traded (GWh)	Traded (million€)	Avg. DAM (€/MWh)
2025	January	4,873	€853	€167.51
	February	4,413	€636	€140.85
		-9.44%	-25.43%	-15.91%

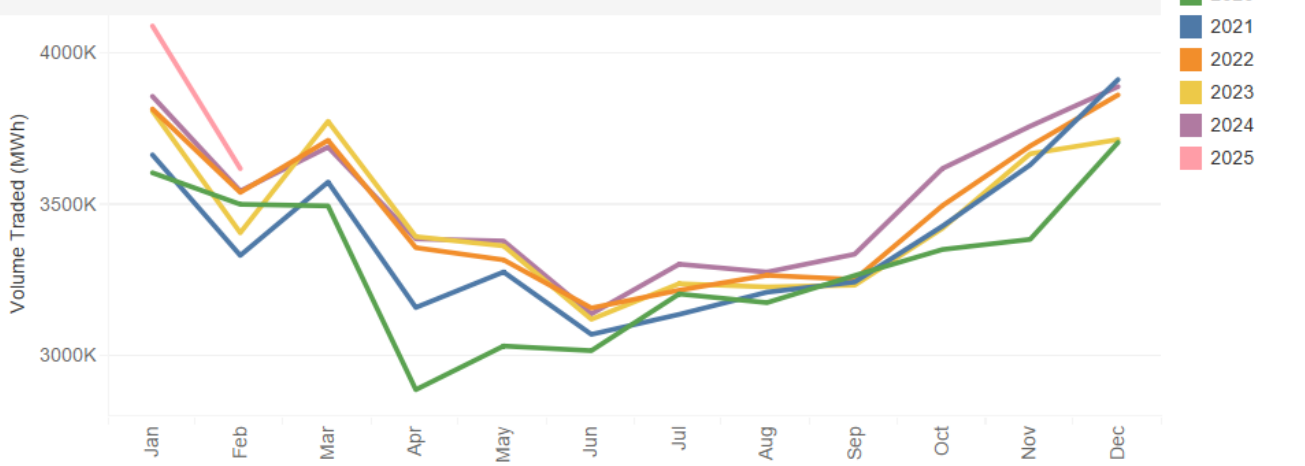
### Volumes Last Year



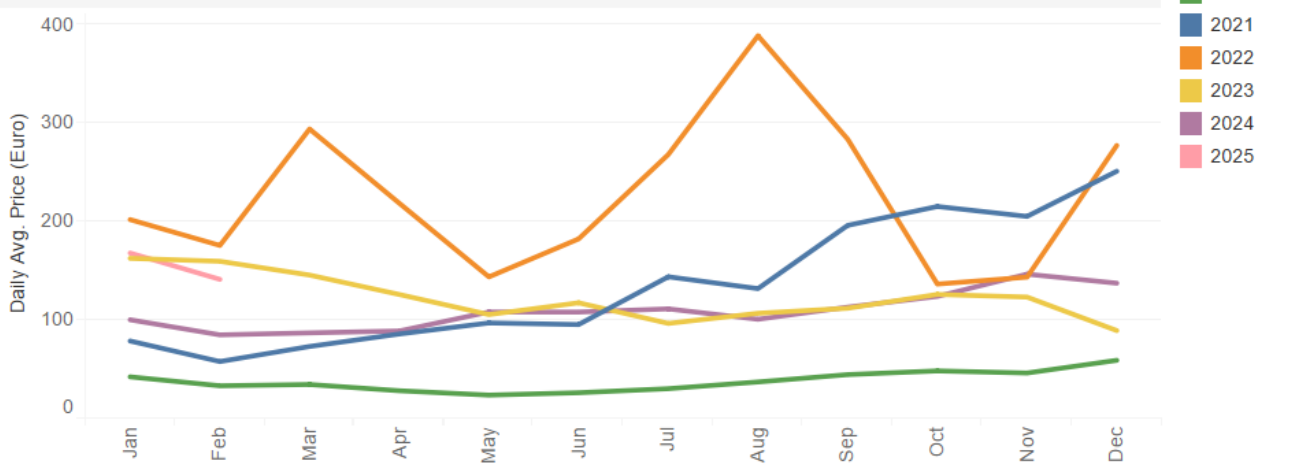
### Volumes Current Year



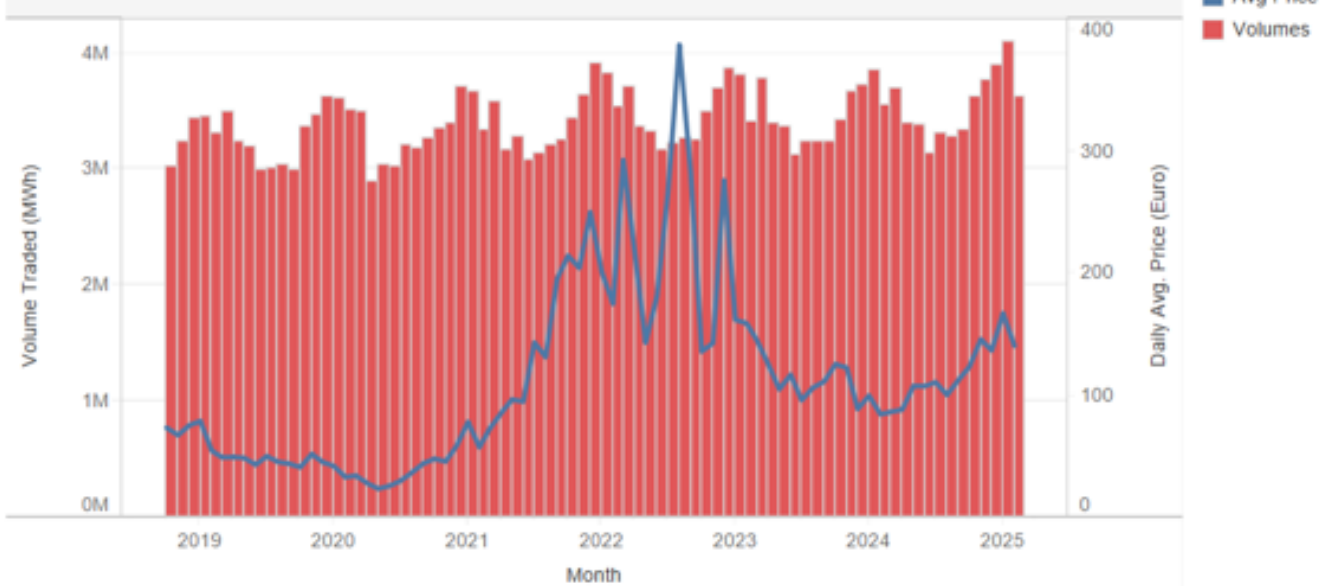
## DAM Volume Traded (MWh)



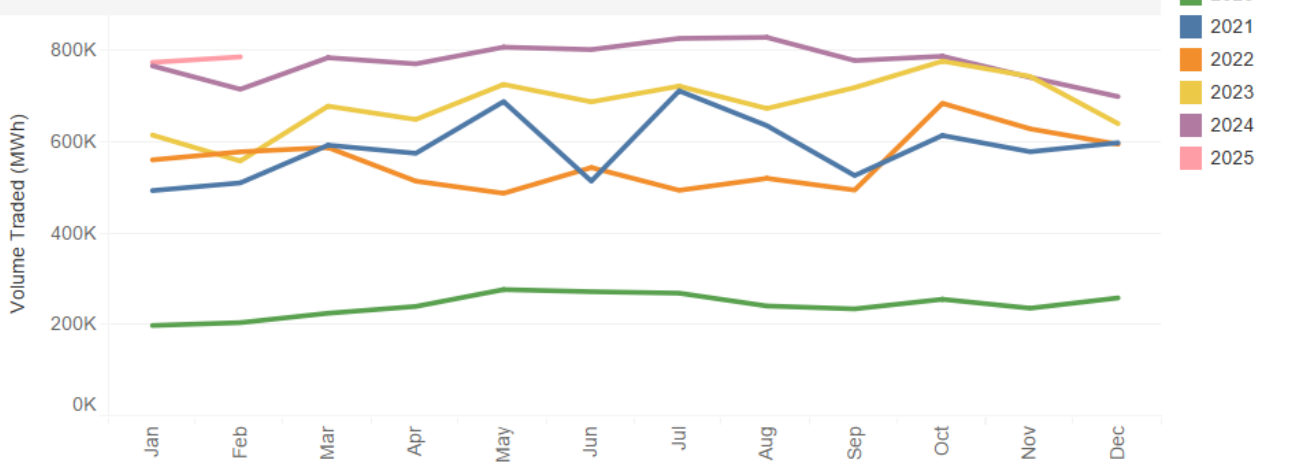
## DAM Daily Average Price



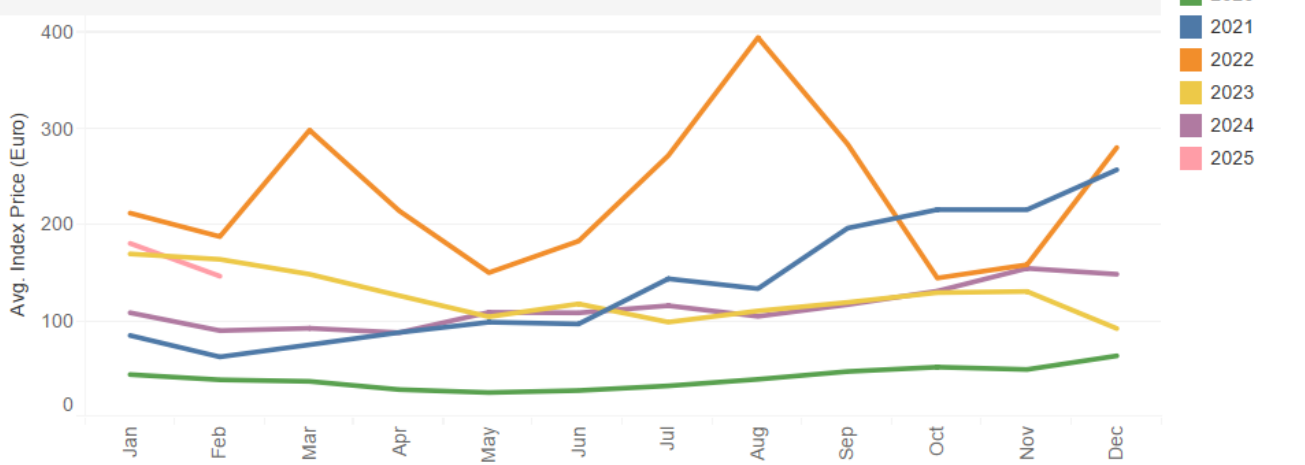
## DAM Price Vs Volume



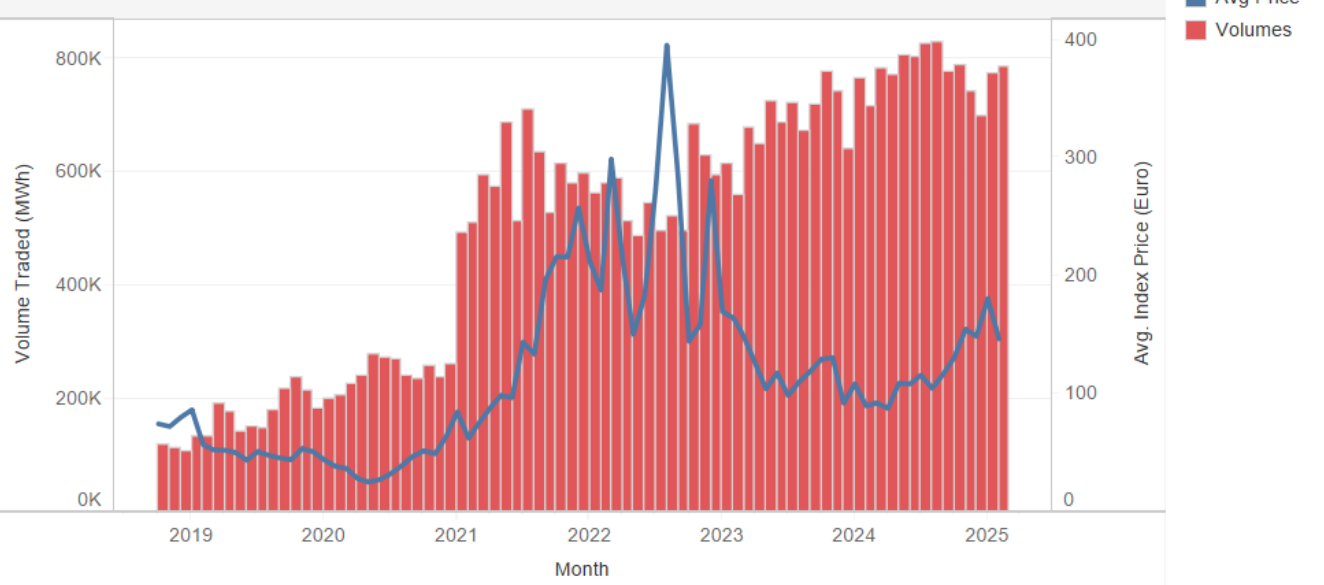
## IDA Volume Traded (MWh)



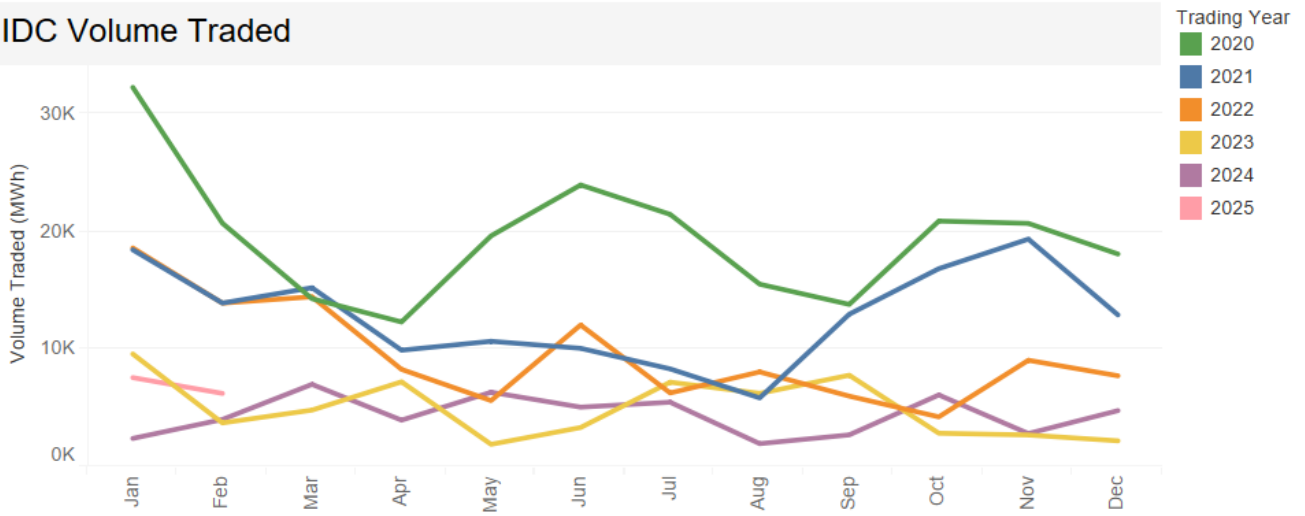
## IDA Average Index Price



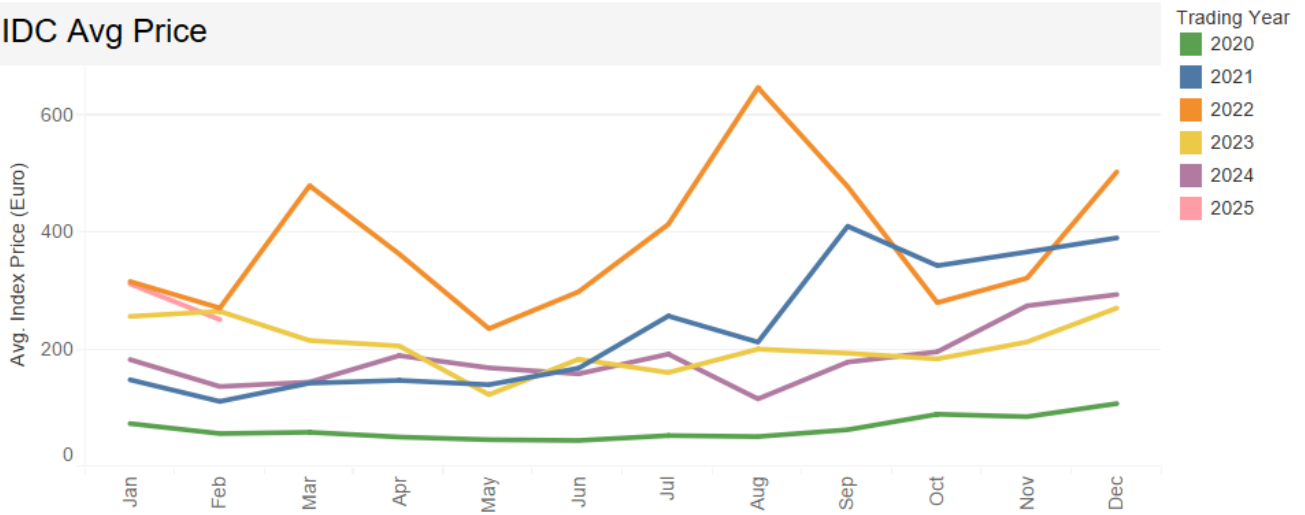
## IDA Price vs Volume



## IDC Volume Traded



## IDC Avg Price



## IDC Volume Traded Vs Avg Price

