

July-September 2020 Report

Email: info@semopx.com
Website: www.semopx.com

Telephone: 1800 283 010
0800 008 3010
+353 1 6688183

Ireland
Northern Ireland
International



Traded (GWh)

YTD 2020	31,540	▲4%
YTD 2019	30,464	
Q3 2020	10,450	▲8%
Q3 2019	9,673	



Traded (million €)

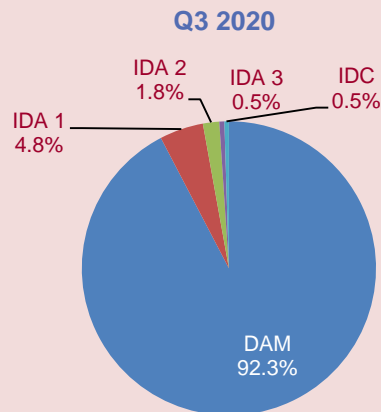
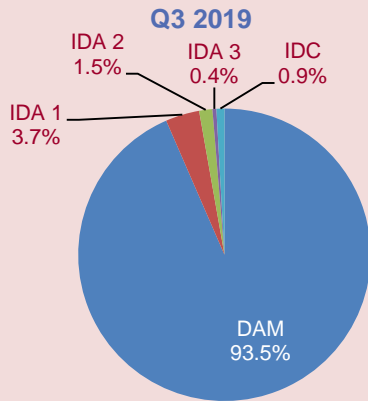
€ 1,090.18	▼33%
€ 1,625.42	
€ 398.39	▼14%
€ 463.63	



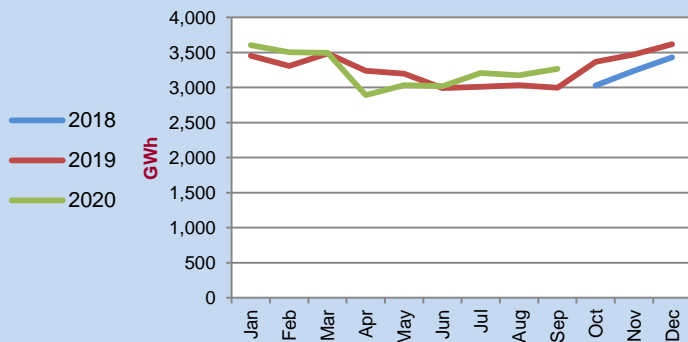
DAM avg. MWh/€

€ 33.14	▼36%
€ 51.62	
€ 37.10	▼20%
€ 46.65	

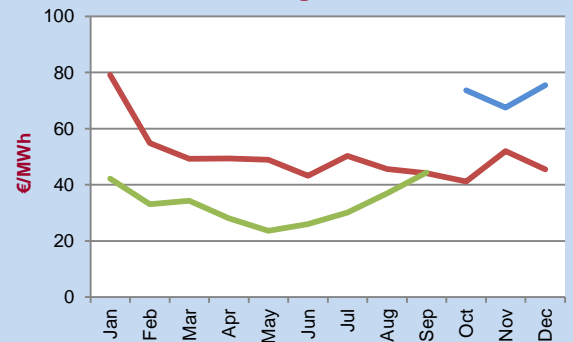
Volume Traded by Market (MWh)



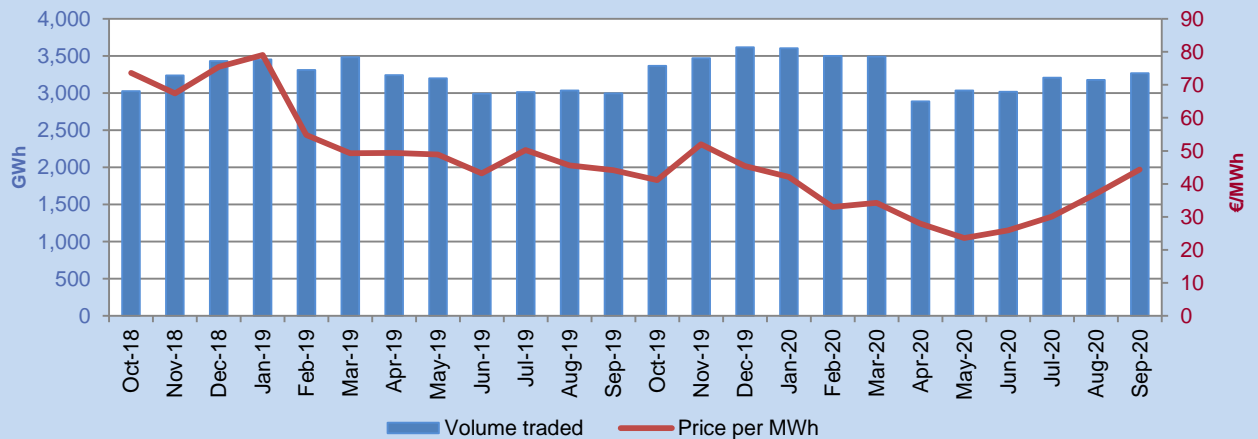
Volume Traded



Average Price

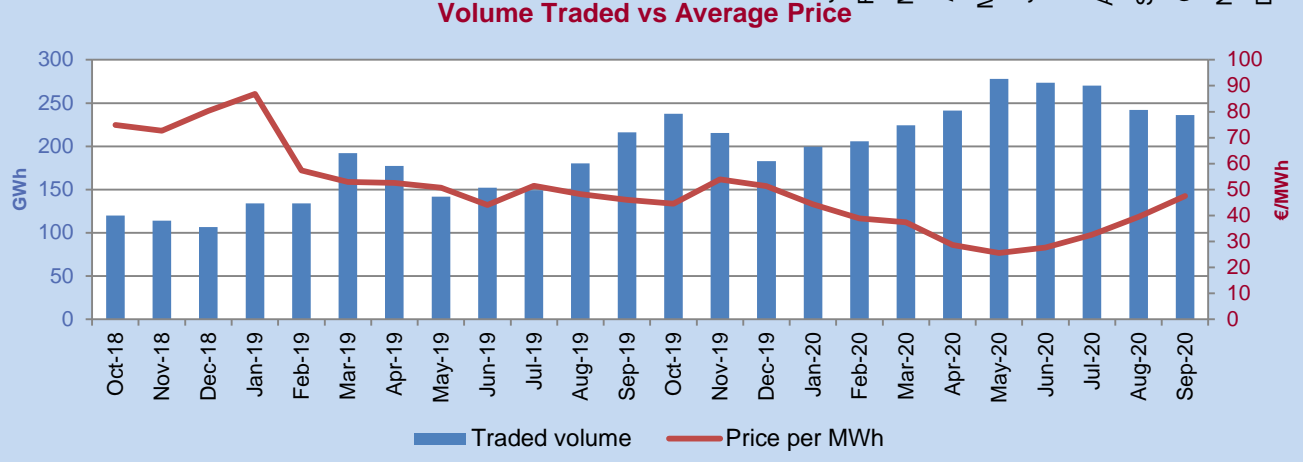
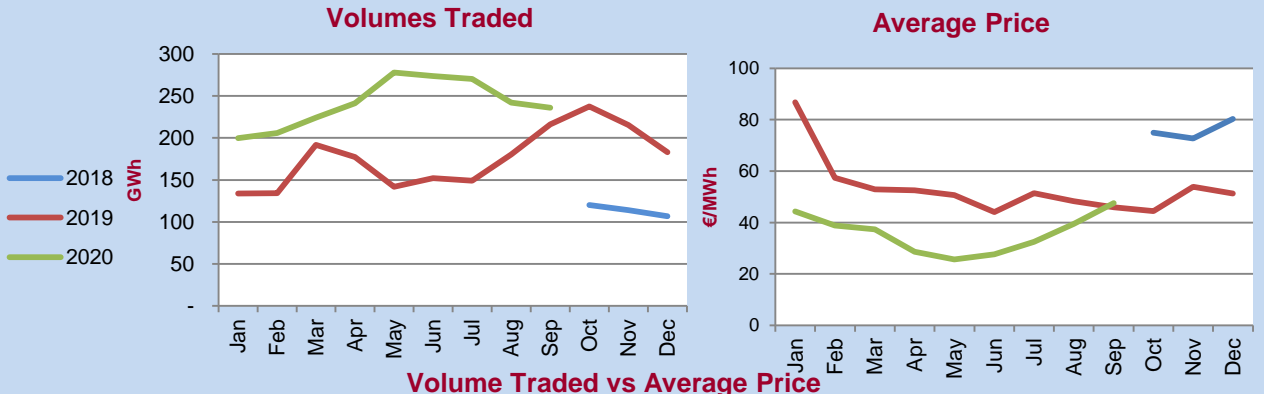


Volume Traded vs Average Price

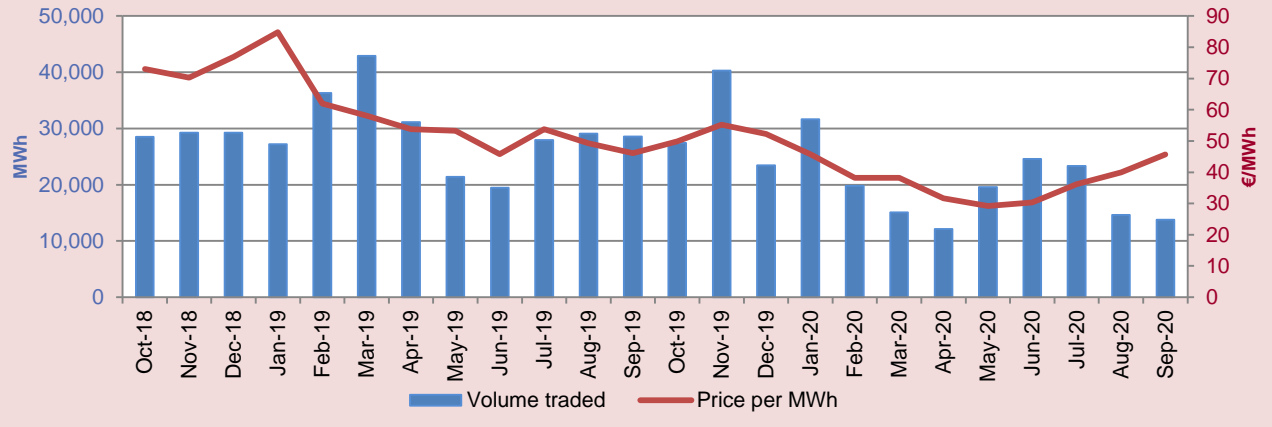
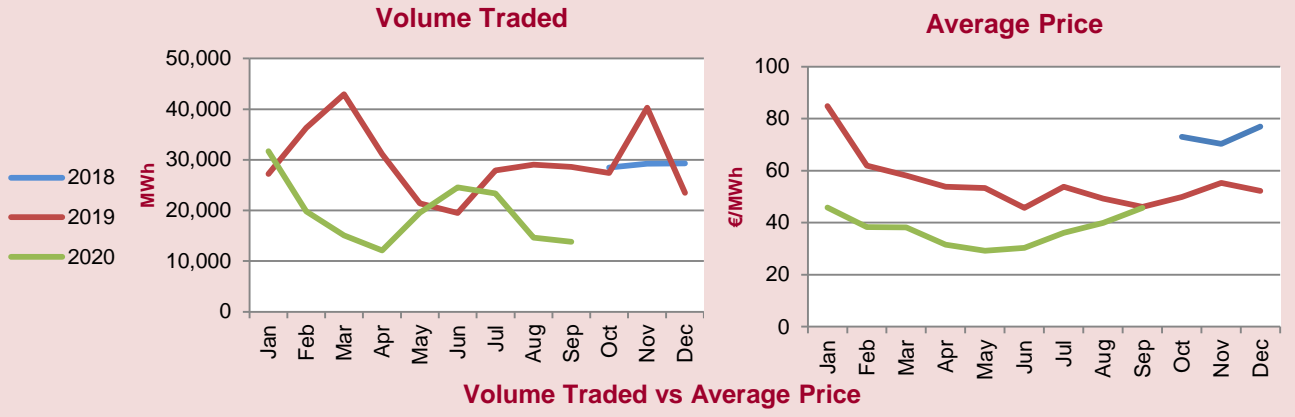


Day-Ahead Market (DAM)

Intraday Market (IDA)



Intraday Continuous (IDC)



DAM: single pan-European energy trading platform in the ex-ante time frame for scheduling bids and offers and interconnector flows across regions and power exchanges within Europe.

IDA 1,2 & 3: market consisting of three daily auctions that allows members to adjust their physical positions closer to real time. For IDA1 and IDA2 SEM is coupled with the GB bidding area via Moyle and EWIC interconnectors. IDA3 is a local SEM-only auction which is not coupled with the GB bidding area.

IDC: local continuous price matching market, allowing members an additional route to market and to adjust their physical positions closer to real time.