

February 2023 Report



Traded (GWh)

YTD 23	8,406	
YTD 22	8,530	▼ 1%
Feb. 23	3,970	
Feb. 22	4,135	▼ 4%

Feb. 23	3,970	▼ 11%
Jan. 23	4,436	



Traded (million€)

€	1,388.17	▼ 16%
€	1,662.21	
€	643.19	▼ 14%
€	745.09	

€	643.19	▼ 14%
€	744.98	

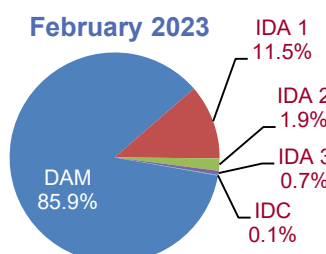
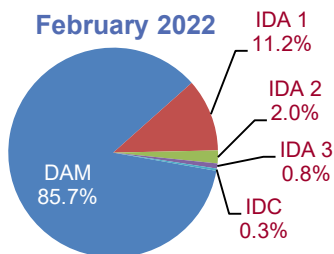


DAM AVG. (€/MWh)

€	160.68	▼ 15%
€	188.13	
€	159.13	▼ 9%
€	175.08	

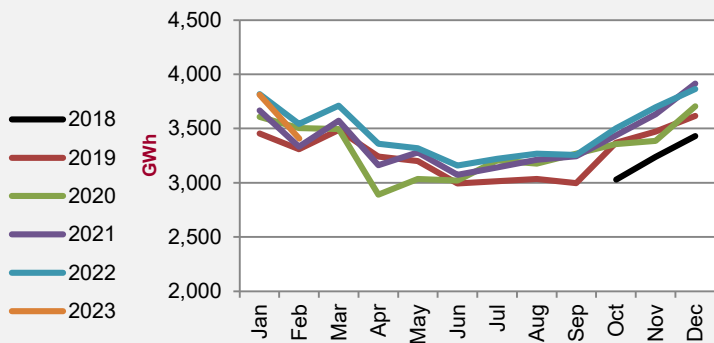
€	159.13	▼ 2%
€	162.23	

Share of Traded Volumes by Market (%)

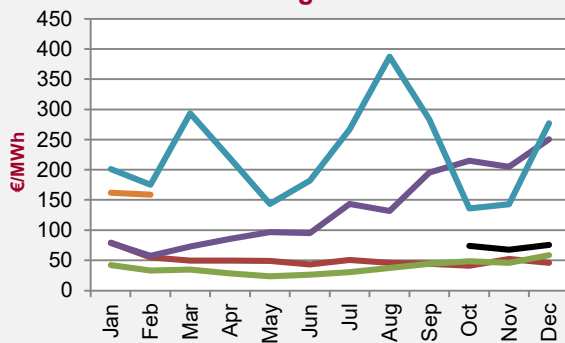


Day-Ahead Market (DAM)

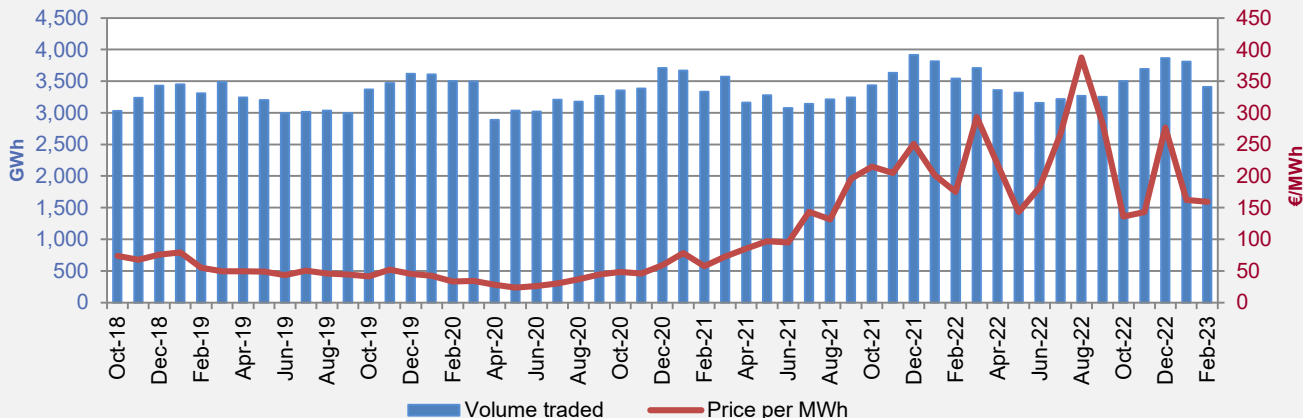
Volume Traded



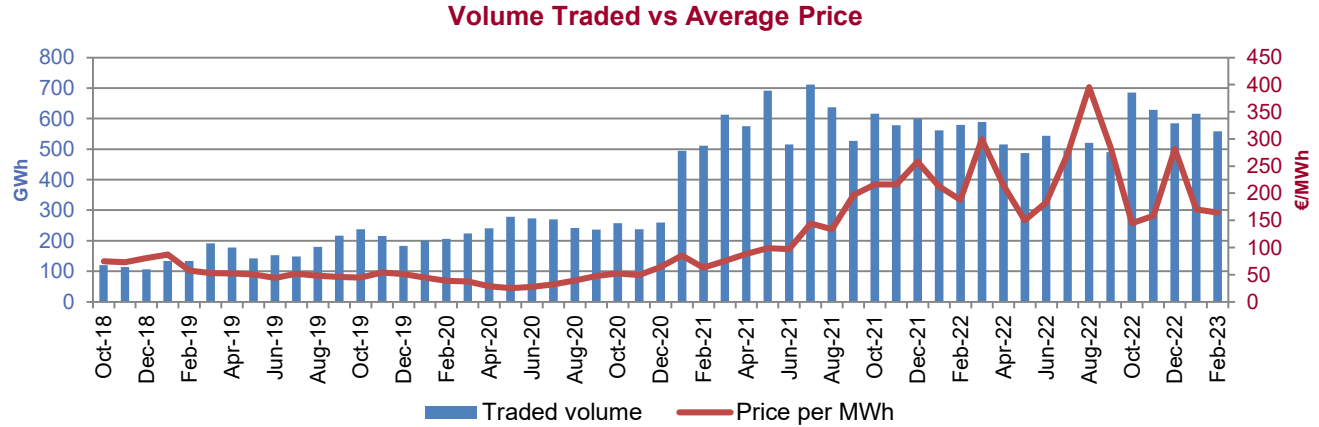
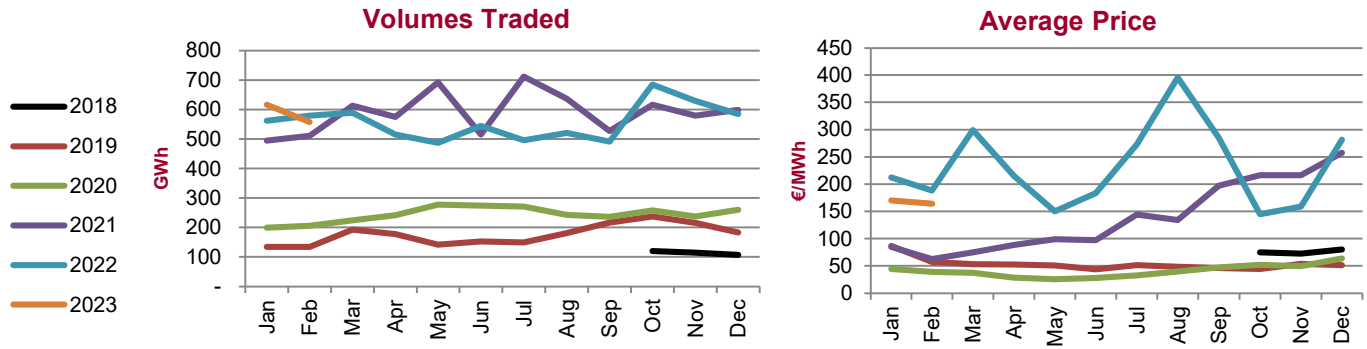
Average Price



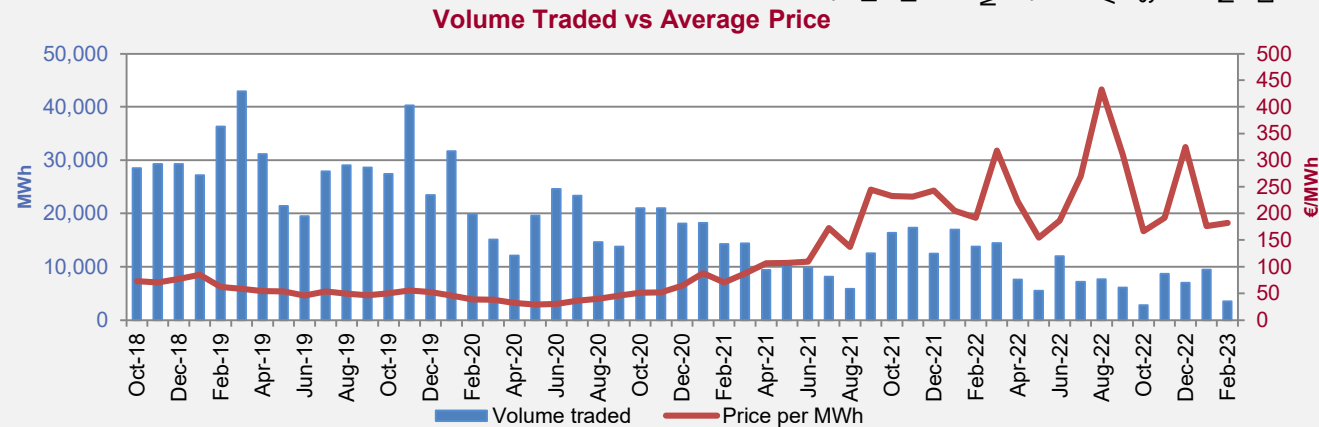
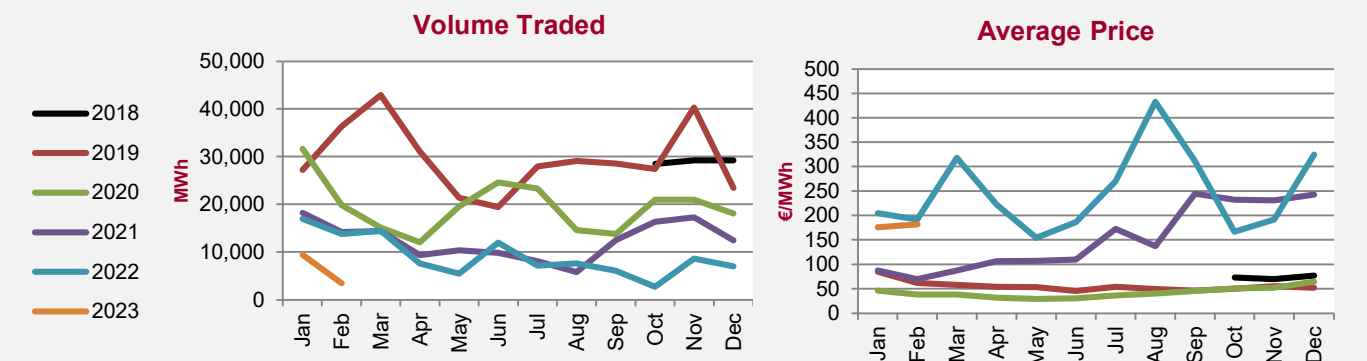
Volume Traded vs Average Price



Intraday Market (IDA)



Intraday Continuous (IDC)



Telephone:
 Ireland 1800 283 010
 Northern Ireland 0800 008 3010
 International +353 1 6688183

Email:
info@semopx.com

Website:
www.semopx.com